

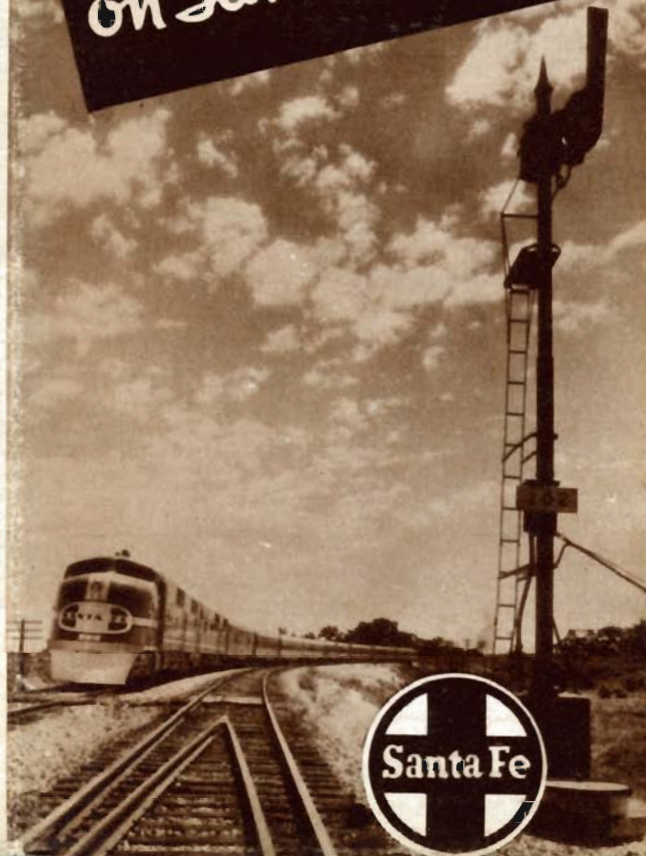
SANTA FE TICKET OFFICES

Alhambra, Calif.	132 W. Main St.
Atlanta, Ga.	815 Rhodes-Haverty Bldg.
Bakersfield, Calif.	Santa Fe Station
Berkeley, Calif.	98 Shattuck Square
Boston, Mass.	Rooms 4-5 Little Bldg.
Buffalo, N. Y.	201 Elliott Square Bldg.
Chicago, Ill.	179 W. Jackson Blvd.
Cincinnati, Ohio.	703 Dixie Terminal Bldg.
Cleveland, Ohio.	1105 Terminal Tower Bldg.
Colorado Springs, Colo.	200 Santa Fe Station
Denver, Colo.	524-17th Street
Des Moines, Iowa.	601 Equitable Bldg.
Detroit, Mich.	504 Transportation Bldg.
Fresno, Calif.	Santa Fe Station
Glendale, Calif.	107 So. Brand Blvd.
Highland Park, Calif.	Santa Fe Station
Hollywood, Calif.	6405 Hollywood Blvd.
Huntington Park, Calif.	6530 Pacific Blvd.
Indianapolis, Ind.	311 Merchants Bank Bldg.
Inglewood, Calif.	130 So. Market St.
Kansas City, Mo.	1100 Baltimore Ave.
Long Beach, Calif.	117 Pine Ave.
Los Angeles, Calif.	743 So. Hill St.
Milwaukee, Wis.	401 Majestic Bldg.
Minneapolis, Minn.	211 Metropolitan Life Bldg.
New York, N. Y.	500 Fifth Avenue
Oakland, Calif.	432 Thirteenth St.
Pasadena, Calif.	Santa Fe Station
Peoria, Ill.	211 Jefferson Bldg.
Philadelphia, Pa.	302-3 Franklin Trust Bldg.
Phoenix, Ariz.	149 No. Central Ave.
Pittsburgh, Pa.	1222 Gulf Bldg.
Pomona, Calif.	Santa Fe Station
Portland, Ore.	1015 American Bank Bldg.
Redondo Beach, Calif.	Santa Fe Station
Riverside, Calif.	Santa Fe Station
Sacramento, Calif.	1000-10th St.
St. Joseph, Mo.	505 Francis St.
St. Louis, Mo.	296 Arcade Bldg.
Salt Lake City, Utah.	606-7 McCormick Bldg.
San Bernardino, Calif.	Santa Fe Station
San Diego, Calif.	Cor. 5th Ave. and B St.
San Francisco, Calif.	235 Geary St.
San Jose, Calif.	115 So. First St.
San Pedro, Calif.	201 Seventh St.
Santa Ana, Calif.	301 No. Main St.
Santa Barbara, Calif.	915 State St.
Santa Monica, Calif.	318 Santa Monica Blvd.
Santa Rosa, Calif.	217 Fourth St.
Seattle, Wash.	The 1411 Fourth Ave. Bldg.
Stockton, Calif.	101 E. Weber Ave.
Tulsa, Okla.	417 So. Boston Ave.
Washington, D. C.	525 Shoreham Bldg.
Whittier, Calif.	126 No. Greenleaf St.
Wichita, Kan.	314 Union National Bank Bldg.
Wichita Falls, Tex.	608 Staley Bldg.

PASSENGER DEPARTMENT OFFICIALS

T. B. GALLANER, Pass. Traffic Mgr., Santa Fe System Lines, Chicago
 C. C. THOMPSON, G. P. A., A. T. & S. F. Ry.—Coast Lines, Los Angeles
 H. C. VINCENT, Gen. Pass. Agt., A. T. & S. F. Ry.—Topeka
 L. R. EVERETT, A. G. P. A., A. T. & S. F. Ry.—Coast Lines, San Francisco
 T. H. MURRAY, A. G. P. A., A. T. & S. F. Ry.—Coast Lines, Phoenix
 A. C. ATER, Gen. Pass. Agt., G. C. & S. F. Ry.—Galveston
 E. H. JOHNSON, Gen. Pass. Agt., Panhandle and Santa Fe Ry., Amarillo

Camera Notes
on Santa Fe trips





The Grand Canyon . . . neither words, camera, nor brush can ever fully portray the indescribable beauty of the Grand Canyon of Northern Arizona—Nature's most colorful masterpiece. This breath-taking spectacle, 4 to 18 miles wide, 217 miles long, and a vertical mile deep, is served the year 'round by the Santa Fe—the only railroad entering this National Park—with Pullmans direct to the Canyon's Rim • Grand Canyon side trips are convenient and economical for Santa Fe transcontinental patrons . . . and the one to three-day Grand Canyon all-expense tours, which can be purchased with your railroad ticket, offer varied itineraries that include motor drives along the Canyon's Rim, saddle trips down into the painted gorges, and accommodations at Fred Harvey's famous El Tovar Hotel on the brink of the Canyon.

• For full details about the interesting places shown in this folder, just write to your nearest Santa Fe ticket office, or any of the Santa Fe Passenger Department officials listed on the back cover



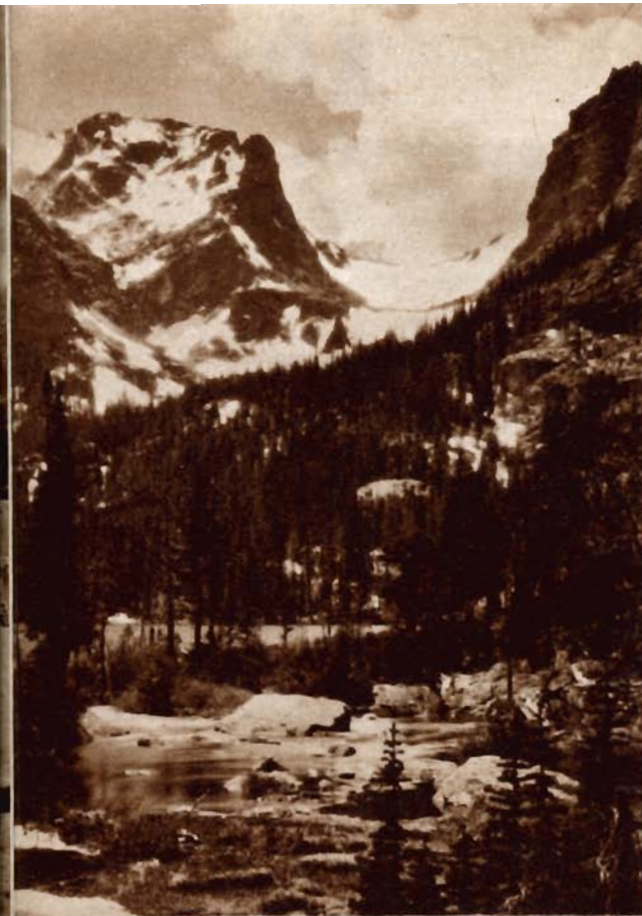
La Fonda and a corner of the Plaza in Old Santa Fé



Old Santa Fé . . . capital of the vast New Mexico territory since the days of the Conquistadores, reflects the quiet charm and hospitality of its early Spanish-American days. Here, facing the historic old Plaza, are the 300 year old Palace of the Governors, and many other historical sites you'll enjoy visiting in this picturesque "City of the Holy Faith."



Indian-detours . . . delightful one to three day motor cruises, exploring intimately the age-old inhabited Indian pueblos, prehistoric cliff dwellings, and primitive Spanish-American mountain villages in the hinterlands roundabout Old Santa Fé, New Mexico
 ● Indian-detour guests make their headquarters at Fred Harvey's charming La Fonda, facing the historic plaza in Old Santa Fé itself.



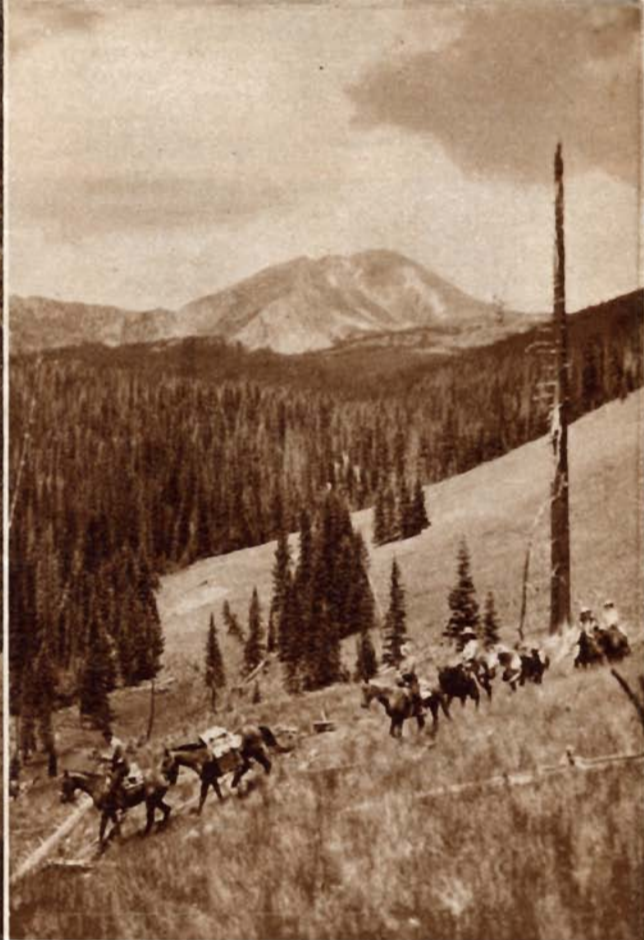
Colorado Rockies . . . snow-topped peaks, great pine forests, lakes and streams, vast fields of wild flowers, prehistoric ruins, picturesque mining and ghost towns, dude ranches and resorts, Denver, Colorado Springs, Pueblo, LaJunta and other important points in this popular mountain playground are all easily reached via Santa Fe.



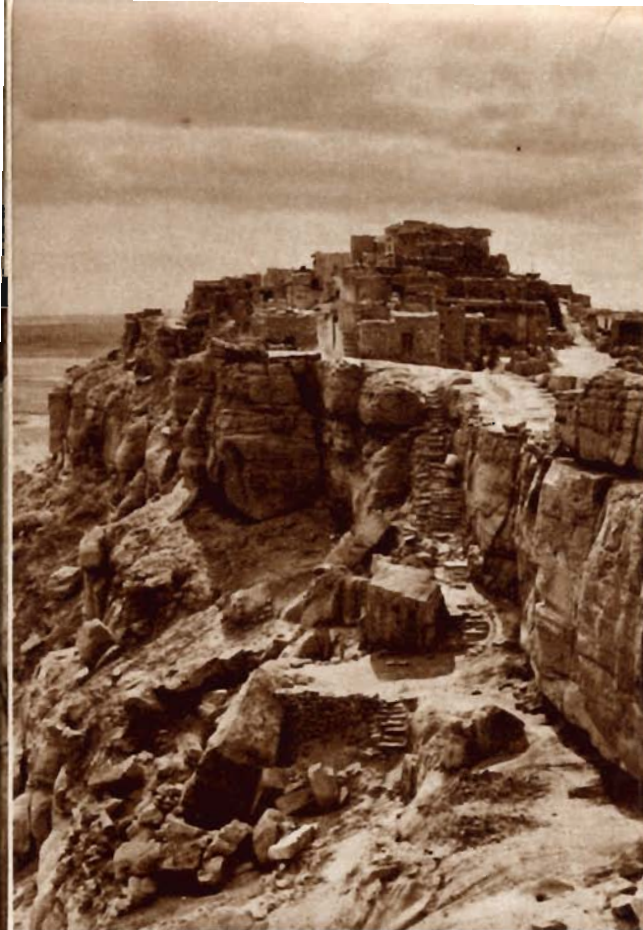
Carlsbad Caverns, in the southeastern corner of New Mexico, are without a peer among the famous caves of the world—in height and size of their enormous rooms, galleries and passages, and in the delicate coloring and bewildering variety of the formations found there • Santa Fe is the only railroad to Carlsbad, New Mexico.



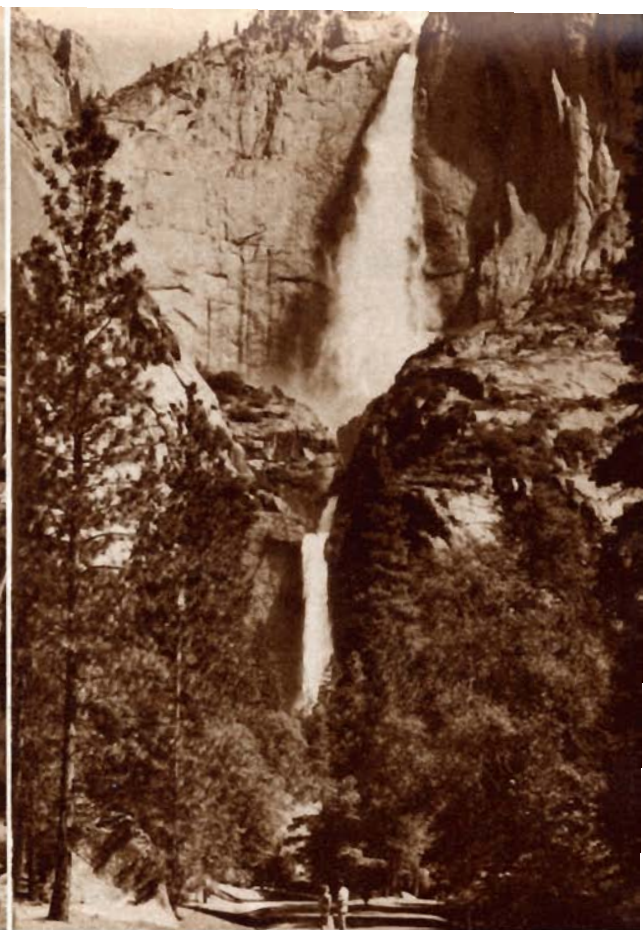
Navajo Reservation . . . land of weird rock formations and painted cliffs, north of the Santa Fe mainline, occupies 20,000 square miles of northwestern New Mexico and northeastern Arizona, and is inhabited by over 40,000 nomad Indians noted for their blanket weaving, silver crafts, and age-old religious ceremonies.



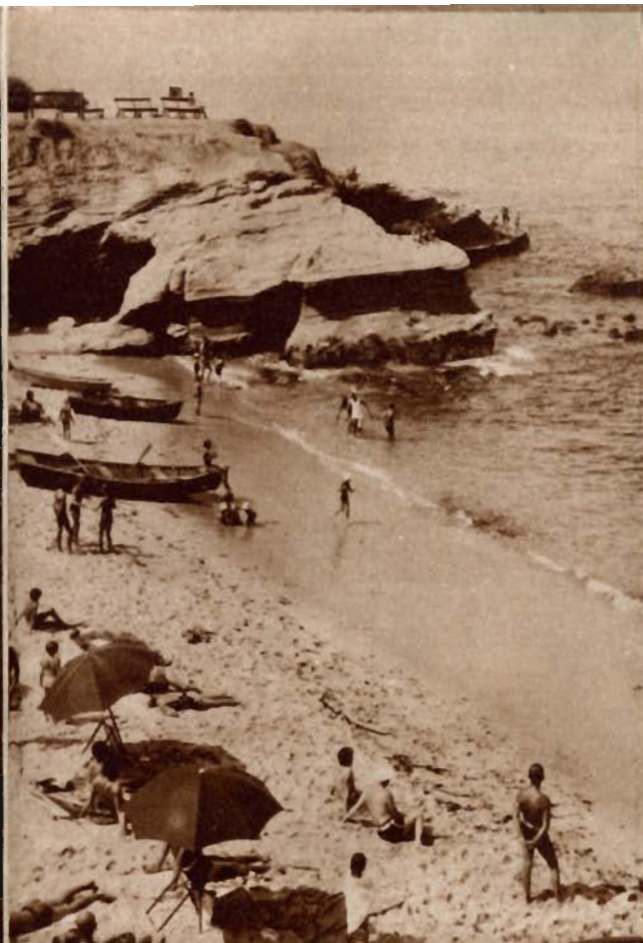
Summer Dude Ranches . . . along the Santa Fe, in the cool mountains of Southern Colorado, Northern New Mexico, Arizona, and California, are scores of fine dude ranches offering a wide choice of comfortable accommodations. ● Santa Fe's free big ranch booklet, crammed with pictures, gives a world of helpful information on the fine ranches in this territory.



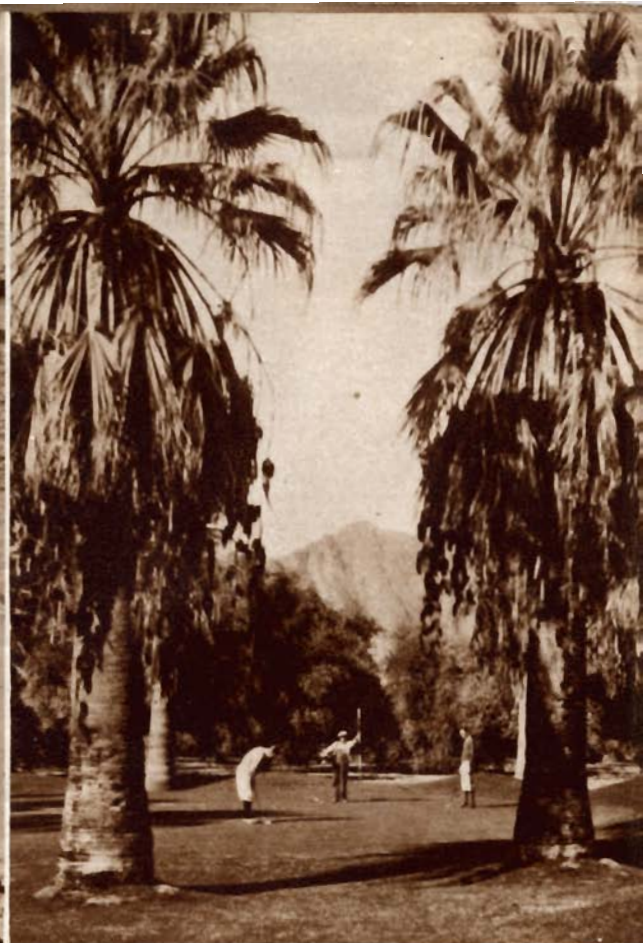
Hopiland . . . about 100 miles north of Winslow and the Santa Fe mainline, in northern Arizona, is the ancestral home of the Hopi, one of the Southwest's most picturesque Indian tribes. Annually in August, the Snake Dance, weirdest of American aboriginal ceremonials, is held at one of the age-old villages perched on the barren mesas of the Painted Desert.



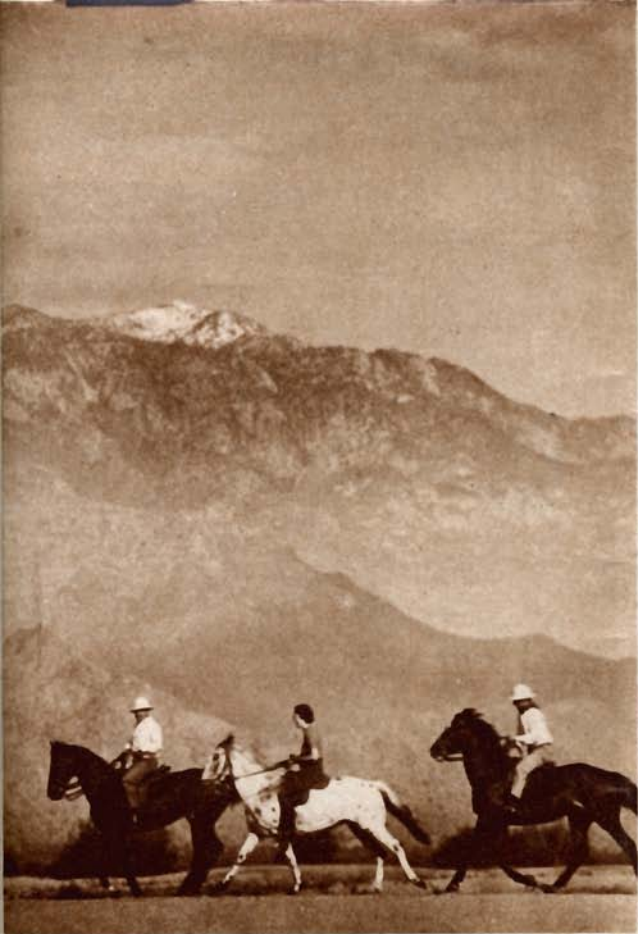
Yosemite National Park, about 200 miles east of San Francisco on the western slopes of California's Sierra Nevada Mountains, is one of Nature's most enchanting wonderlands . . . with majestic waterfalls, giant forests and glacial lakes. Santa Fe provides fast streamlined daylight service for Yosemite, from both Los Angeles and San Francisco.



Southern California . . . a land apart from all others, offering a delightful year-round climate, a wide variety of marine, desert, pastoral and mountain scenery, outdoor sports at their best, beautiful cities and villages, and a rich historical background. Santa Fe's great fleet of California trains offer ultra-modern service to fit any purse.



Phoenix . . . the center of one of America's most popular winter playgrounds, an area containing many famous resorts and ranches flooded with warm, healthful sunshine from October to May. Throughout the winter season, there is swift through service between Chicago and Phoenix, Arizona, every day on Santa Fe's famous streamlined *Chief*.



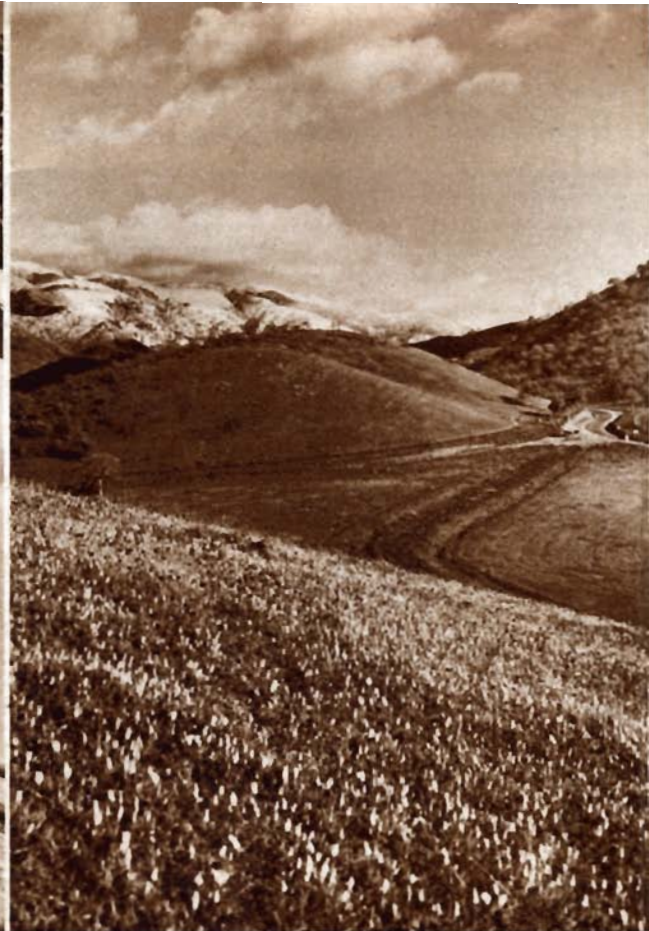
Palm Springs . . . a desert sun-drenched oasis in the shadow of the snow-topped San Jacinto Mountains in Southern California, and the center of many popular winter ranches and resorts. Santa Fe passengers leave their transcontinental train at San Bernardino, California, and motor a few miles across the desert to Palm Springs, or to Arrowhead Spa in the warm foothills.



Winter Dude Ranches around Southern New Mexico; Phoenix, Wickenburg, Prescott, and the Verde Valley in Arizona; Palm Springs and other sunny California spots, are easily reached via Santa Fe's swift daily trains • Santa Fe's free Dude Ranch Picture Booklet will give you a world of information about the Southwest's winter ranches and resorts.



Winter Sports...Yosemite National Park, in California's high Sierras, is a magic white world of snow and ice from mid-December to Spring. Here are the West's largest outdoor skating rink, thrilling ski runs, quarter-mile toboggan slides, and other winter sports at their best • Yosemite is only a few hours from San Francisco and the pleasant warmth of Los Angeles via Santa Fe.



Tehachapi Mountains provide a picturesque setting for the Ridge Route 112-mile motor coach drive between Los Angeles and Bakersfield, where Santa Fe travelers board the gay **GOLDEN GATE** streamliner and other swift Santa Fe trains for Yosemite National Park, San Francisco, and intermediate points in the scenic San Joaquin Valley.



16

Superb Streamliners

The **CHIEF**, extra-fare, solid-Pullman streamliner . . . the many-hours fastest daily first-class train between Chicago and Los Angeles, and the only daily streamliner between those two points.

The **SUPER CHIEF**, extra-fare solid Pullman streamliner . . . the only all-first-class streamliner operating between Chicago and Los Angeles on a 39½ hour schedule.

EL CAPITAN . . . the West's only all-chair-car transcontinental streamliner... a gleaming time-and-dollar saver between Chicago and Los Angeles that is swift as the *Super Chief* itself.

The **SAN DIEGAN** streamliner . . . twice daily between Los Angeles and San Diego.

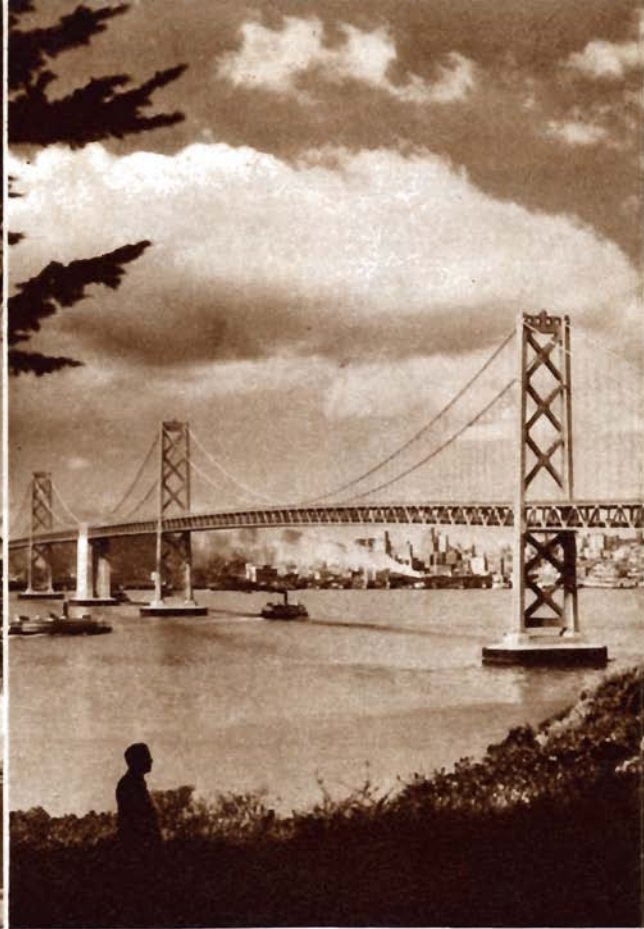
The **GOLDEN GATE** streamliner . . . twice daily, coordinated rail-bus service between Los Angeles and San Francisco.

The **CHICAGOAN** and **KANSAS CITYAN** streamliners, daily between Chicago, Kansas City, Topeka, Wichita and Oklahoma City • New streamliner service, too, between Kansas City and Tulsa.

• **Fred Harvey dining service**
features Santa Fe travel



Los Angeles . . . the metropolis of Southern California, is the hub of a vast pleasureland including such famous travel objectives as San Diego, home port of the Pacific fleet, Pasadena, site of the annual Tournament of Roses; Hollywood and its movie studios; and Catalina Island. (Above) The new passenger terminal at Los Angeles.



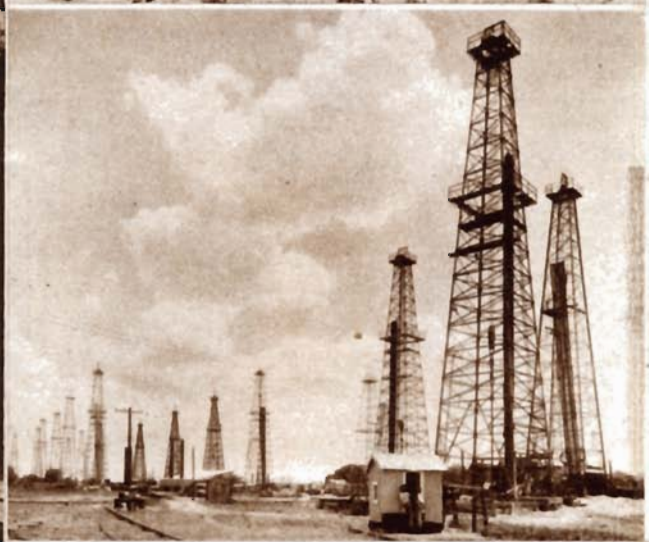
San Francisco, with its thrilling historical background, is "one of the world's most interesting cities." Here are a 35-mile water front, 32 parks, famous cafes and hotels, military headquarters, the largest harbor on the Pacific Coast, Chinatown, and the two largest bridges in the world. (Above) A section of the Bay Bridge, 8 miles long, linking San Francisco and Oakland.



The Atchison, Topeka and Santa Fe braces more than 13,450 miles of track, stretching from the Pacific coast to the Atlantic; San Diego, Los Angeles, and Oakland, California, to Mexico and the Mexican border. Santa Fe's great feat is the largest in the world. Santa Fe is the only railroad of its kind in the United States and California, and the only railroad entering Grand



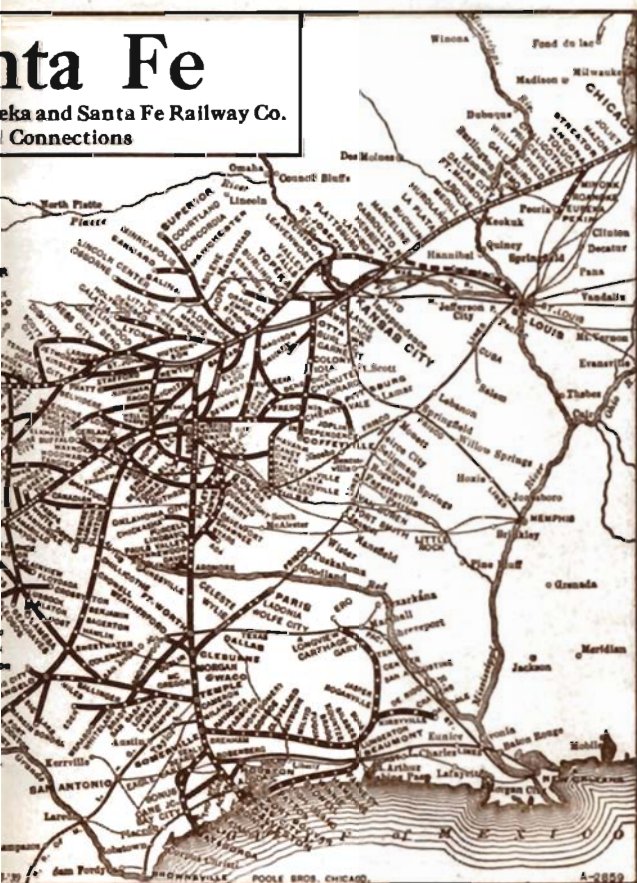
Texas and Oklahoma . . . San Antonio, historic site of the Alamo, "shrine of Texas liberty"; Fort Worth; Dallas; Houston; Galveston; Tulsa; Oklahoma City and other thriving cities in the great states of Texas and Oklahoma are all served by Santa Fe's fine daily trains, including ultra-modern stainless steel streamliner service between Chicago, Tulsa, and Oklahoma City.



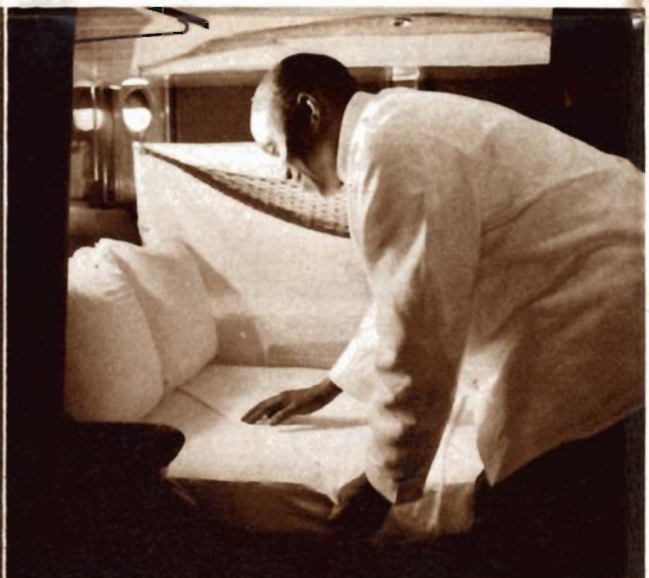
Texas Panhandle and the Pecos country . . . one of America's most productive territories, in cattle raising, oil and natural gas production, cotton, wheat, mineral and many other industries. The key cities of this vast and wealthy area, including Amarillo, San Angelo, Pecos, Presidio, and El Paso are all served by the Santa Fe.

Santa Fe

Atchafalaya and Santa Fe Railway Co.
Connections



Santa Fe Railway System serves 12 states and extends from Chicago, rail center of the nation, to Denver, Colorado; and through Oklahoma and Texas to the Gulf of Mexico. A fleet of 16 gleaming stainless steel streamliners is the operating on its own rails all the way between Chicago and Canyon National Park.





Fred Harvey Meals . . . as you travel through the great Southwest on the Santa Fe, you'll enjoy delicious Fred Harvey meals served in cheery, air-conditioned dining cars; or in the picturesque and attractive dining stations where certain Santa Fe trains stop for meals • Fred Harvey cuisine has been famous among travelers for more than 60 years.



Courier Nurses . . . registered graduate nurses all, these trimly uniformed and capable young women are a regular part of the train personnel on Santa Fe's economy trains, *El Capitan* and the *Scout*. Their job is to help mothers with babies, to administer to invalids and the aged, and to assist all others requiring their free and friendly service.

Other famous Santa Fe trains

The SCOUT . . . famous transcontinental coach-tourist sleeper economy train between Chicago, Los Angeles, San Diego, and San Francisco, featuring Fred Harvey meals for only 90c a day.

GRAND CANYON LIMITED . . . a fine, fast daily train for all classes of travel between Chicago and Los Angeles, carrying Pullmans direct to the rim of Grand Canyon.

CALIFORNIA LIMITED . . . a favorite with transcontinental travelers for over 40 years, carrying a section-bedroom Pullman; section-compartment-drawing room Pullmans; and chair car, between Chicago and Los Angeles; and a standard Pullman and tourist-sleeper between Denver and Los Angeles.

The RANGER . . . fine daily train between Chicago, Kansas City, Missouri, and Galveston, Texas, carrying standard Pullmans, chair car, club lounge, and observation Pullman between Chicago and San Antonio.

• **Fred Harvey dining service
features Santa Fe travel**

