

#18
 $\angle = 41^{\circ}38'$
 El. 112'
 Sp. 170'

R.S.
 El. = 1'
 Sp. 110'
 $7^{\circ}30'$
 $I = 82^{\circ}24'$
 $6^{\circ}05'$
 $I = 5^{\circ}43'$

#16
 $\angle = 75^{\circ}19'$
 El. = 1'
 Sp. 110'

0.70 0.10 0.00 0.80 0.40 0.40 0.00 0.20 0.40 0.25 0.10 0.00 0.60 0.20 0.00 0.40 0.00

3347.6



B-629.1, 280' O.D.R.T.

Pub. Rd. Gr. Xing. 3' S.I.

Pub. Rd. Gr. Xing. 4th. S.I.

B-628.8, 19' O.D.R.T.

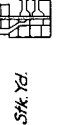
B-628.7, 588'

C. & Steel T.O.P.

To Estab. Xing.

To Flowers

PLUMMER DIST.



Stk. Yd.

B-627.8, 3' S.I.

209' 2 1/2' Tr. T.Bx.

205' 6 1/2' Tr. T.Bx.

Frt. Depot Rt.

B-627.59, 127' 2' C.I.P.

128' 9' V.H.P. S.

2 x 5' 20' Tr. T.Bx.

Aviation Gr. Xing

B-627.55, 284' Tr. T.Bx.

B-627.4, 3' 2' 46' Tr. T.Bx.

Tool Ho.

Pr. Gr. Xing. 11' K. Scale

PLAINVIEW
 M.P. 627.63

Auto Interlocked Xing

F.W. & D.S.P.R.

Fish Sig. Rt. & Lt.

Date St. Gr. Xing

B-627.75

3 1/2 x 19' 200' Tr. T.Bx.

B-627.74, 188' 10' Tr. T.Bx.

B-627.73, 188' 10' Tr. T.Bx.

B-627.72, 188' 10' Tr. T.Bx.

B-627.71, 188' 10' Tr. T.Bx.

B-627.70, 188' 10' Tr. T.Bx.

B-627.69, 188' 10' Tr. T.Bx.

B-627.68, 188' 10' Tr. T.Bx.

B-627.67, 188' 10' Tr. T.Bx.

B-627.66, 188' 10' Tr. T.Bx.

B-627.65, 188' 10' Tr. T.Bx.

B-627.64, 188' 10' Tr. T.Bx.

B-627.63, 188' 10' Tr. T.Bx.

B-627.62, 188' 10' Tr. T.Bx.

B-627.61, 188' 10' Tr. T.Bx.

B-627.60, 188' 10' Tr. T.Bx.

B-627.59, 188' 10' Tr. T.Bx.

B-627.58, 188' 10' Tr. T.Bx.

B-627.57, 188' 10' Tr. T.Bx.

B-627.56, 188' 10' Tr. T.Bx.

B-627.55, 188' 10' Tr. T.Bx.

B-627.54, 188' 10' Tr. T.Bx.

Pub. Rd. Gr. Xing. W.W. X

Pub. Rd. Gr. Xing. AT.S. Sign Rt. Fish. Light Sigs. Rt. & Lt.

Pub. Rd. Gr. Xing. B-626.3, 42' O.D.R.T.

Pub. Rd. Gr. Xing. Pub. Rd. Gr. Xing.

Pub. Rd. Gr. Xing.

Pr. Gr. Xing. B-625.4, Dbl. 25x15x30' Tr. T.Bx.

B-625.4, Dbl. 25x15x30' Tr. T.Bx.

3383.7

3381.7

0.20

0.00

0.40

0.00

To Lubbock

To Canyon

625

624

623

622

621

620

65

El: 2' Sp: 200'

* 15
2° 00'
1:18° 23'

To Lubbock ←

→ To Canyon

0.00

0.21

0.15

0.10

0.00

0.15

0.00

0.20

0.00

0.41

0.466

0.00

0.80

0.60

0.55

0.30

Gr 624.6, 0.61, 4+57.24/41
Tr. 1, Bx.

3387.7

3389.8

3392.8

3394.7

3396.4

3396.4

3402.6

3402.6

3408.1

3404.6

3404.6

3413.4

3419.4

3430.4

Pub. Rd. Gr. Xing

STATE Hwy. # 9

FINNEY
M.P. 621.81

Gr 621.7, 2x1431 Tr. 7, Bx
Main Line
2 x 1 x 61 Tr. 7, Bx, Tr. ks. 162

Gr 620.9, 14' 8 D.P.T.

Pub. Rd. Gr. Xing

Pub. Rd. Gr. Xing

Pub. Rd. Gr. Xing

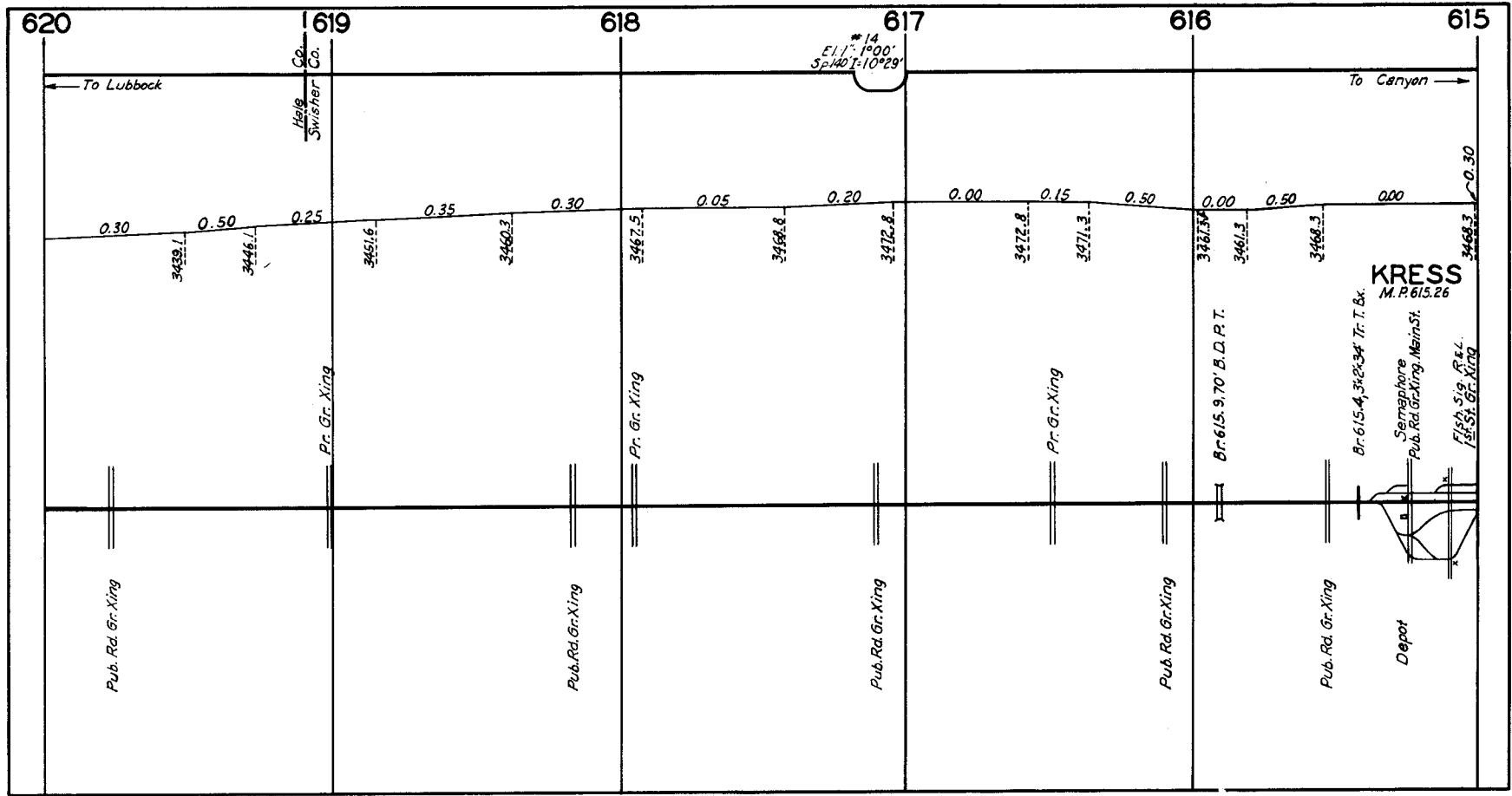
Pub. Rd. Gr. Xing

Pub. Rd. Gr. Xing

Station Sign

Pub. Rd. Gr. Xing
Gr 621.6, 0.61, 2x1431 Tr. 7, Bx
Tr. 1, Bx & 2-Obt. 2x1431
Tr. 7, Boxes-Trk. No. 1.

Pr. Gr. Xing



620

619

618

617

616

615

To Lubbock

Hale Swisher Co.

14
EL 1: 1000'
Sp 140' 1: 10 29'

To Canyon

0.30

0.50

0.25

0.35

0.30

0.05

0.20

0.00

0.15

0.50

0.00

0.50

0.00

0.30

3439.1

3446.1

3451.6

3460.3

3467.5

3468.8

3472.8

3472.8

3474.3

3475.3

3461.3

3468.3

3468.3

Pub. Rd. Gr. Xing

Pr. Gr. Xing

Pub. Rd. Gr. Xing

Pr. Gr. Xing

Pub. Rd. Gr. Xing

Pr. Gr. Xing

Pub. Rd. Gr. Xing

B.C. 615, 9.70' B.D.P.T.

Pub. Rd. Gr. Xing

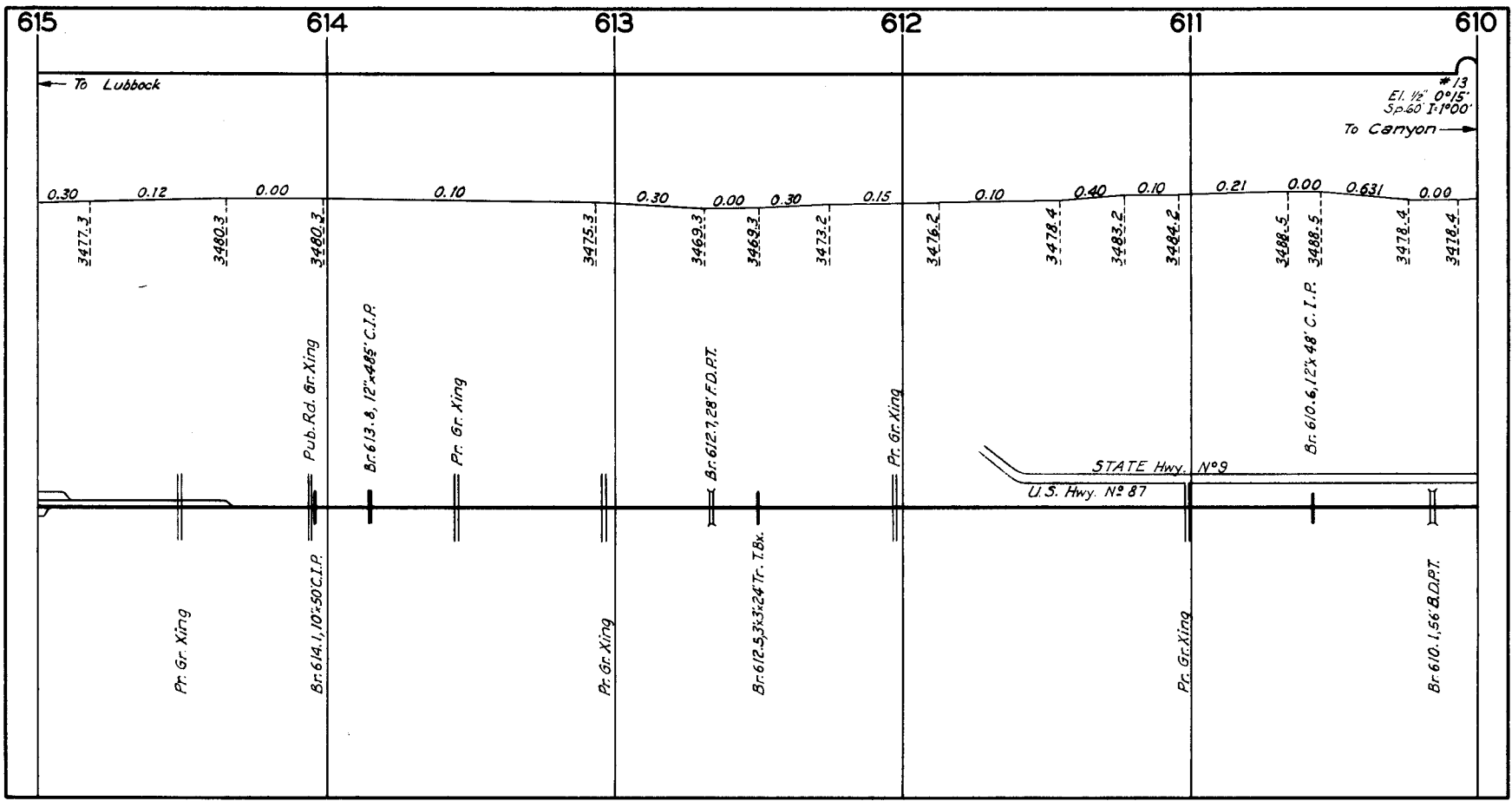
B.C. 615, 4, 3, 2, 3, 4' Tr. T. & C.

Depot

KRESS
M. P. 615.26

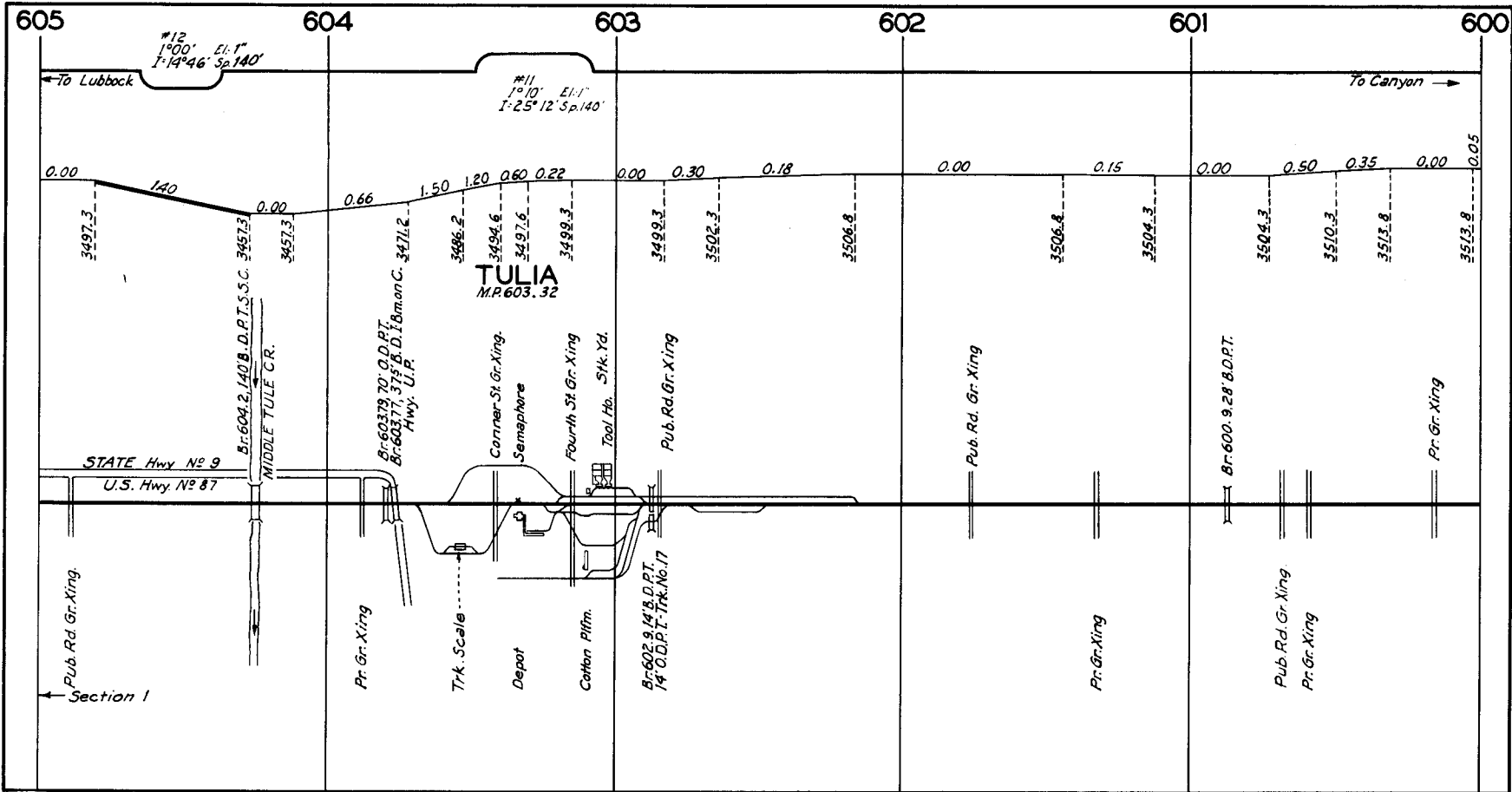
Serrapmore
Pub. Rd. Gr. Xing, Main St.

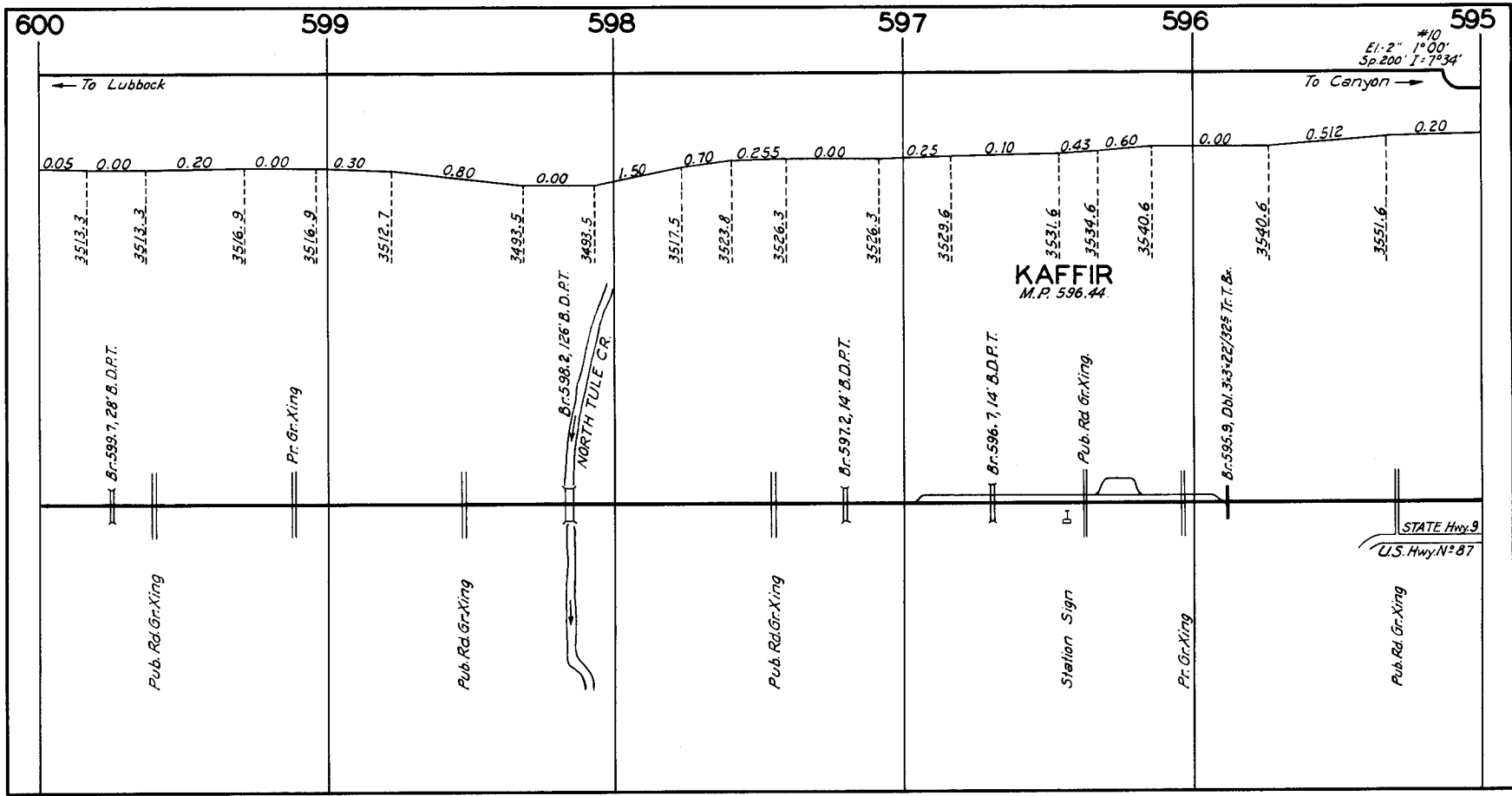
Fish. Sig. R.R.
Fish. St. Gr. Xing

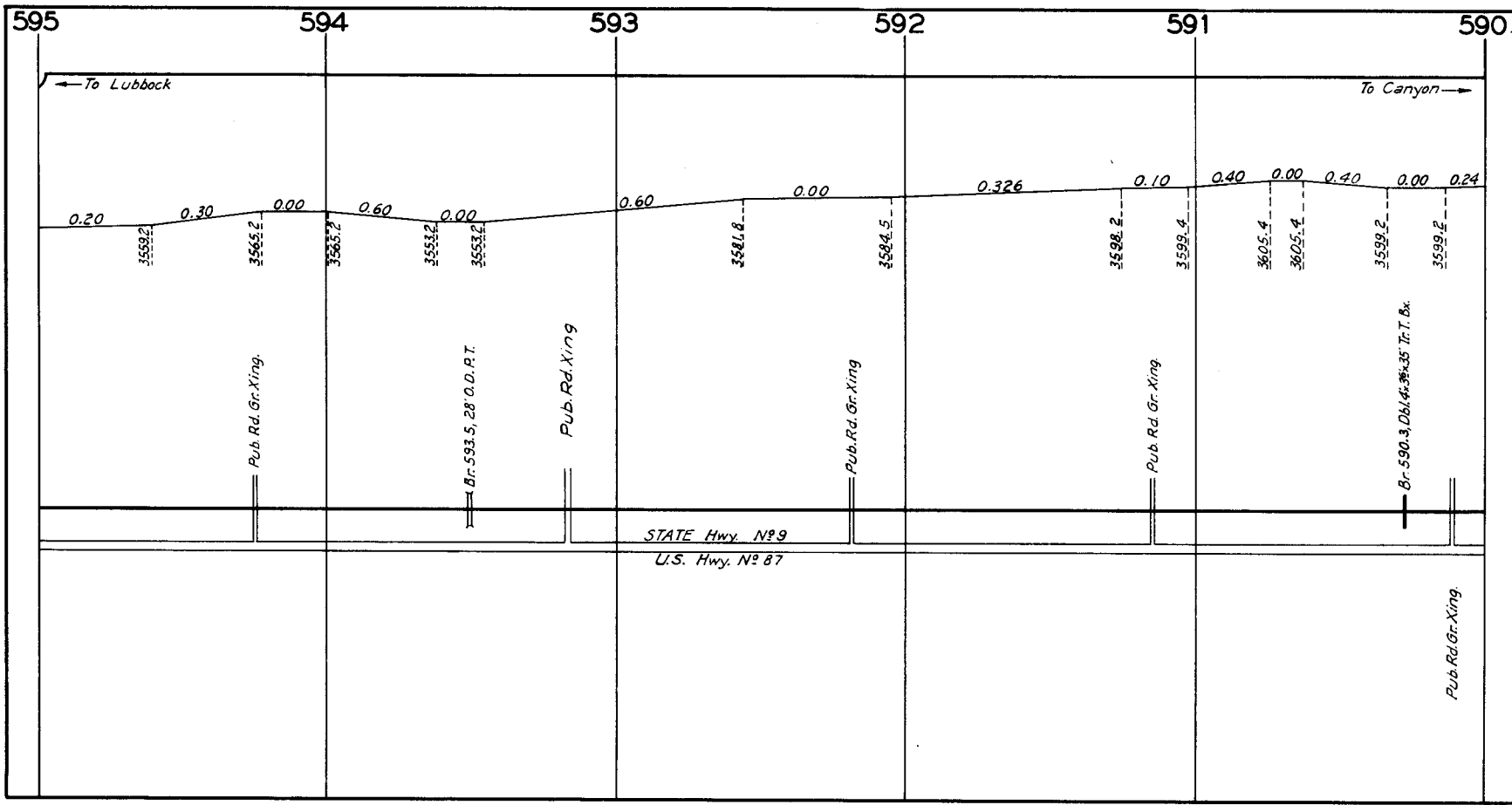


To Lubbock ←

To Canyon →
#13
El. 1/2" 0°15'
Sp. 60 1"=100'







590

589

588

587

586

585

← To Lubbock

To Canyon →

*9
1°00' E. 1 1/2"
1-6°58' Sp 200

0.24 0.00 0.40 0.00 0.50 0.40 0.30 0.00 0.25 0.00 0.60 0.40 0.00 0.10 0.60 0.30 0.00 0.60 0.42

3605.7

3605.7

3601.2

3601.2

3607.2

3611.2

3617.7

3611.7

3614.2

3614.2

3622.6

3617.2

3617.2

3618.2

3635.0

3637.7

3637.7

3656.3

HAPPY
M.P. 588.43

Br. 589, 1,126' O.D. P.T.

HAPPY DRAW

9th St. Gr. Xing.

Stk. Yd.

Bunk Ho.

Gr. Sec. Hos.

Unloading Incline

Semaphore

Main St. Xing.

Tool Ho.

Agents Ho.

Coal Ho. Depot

Fish, Sign, Pt & Lt

Canon Firm.

Pr. Gr. Xing.

Pub. Rd. Gr. Xing.

Br. 587, 7,14' F.D. P.T.

Pr. Gr. Xing.

Br. 587, 0, 14' O.D. P.T.

Pr. Gr. Xing.

Pub. Rd. Gr. Xing.

Br. 585, 6, 143' O.D. P.T.

