

C.T.C.

To Slaton

To Lone Star Jct.

LITTLEFIELD  
M.P. 53.05

#15  
0+44'  
L=6+15'  
G1=1%  
Sp=320

Hwy. U.S. 84

RAIL GR  
RAIL  
BALLAST  
SURFACING  
TIES  
UNDERCUTTER  
STABILIZATION

136 CWR 1985

(REF. ABx-1966)

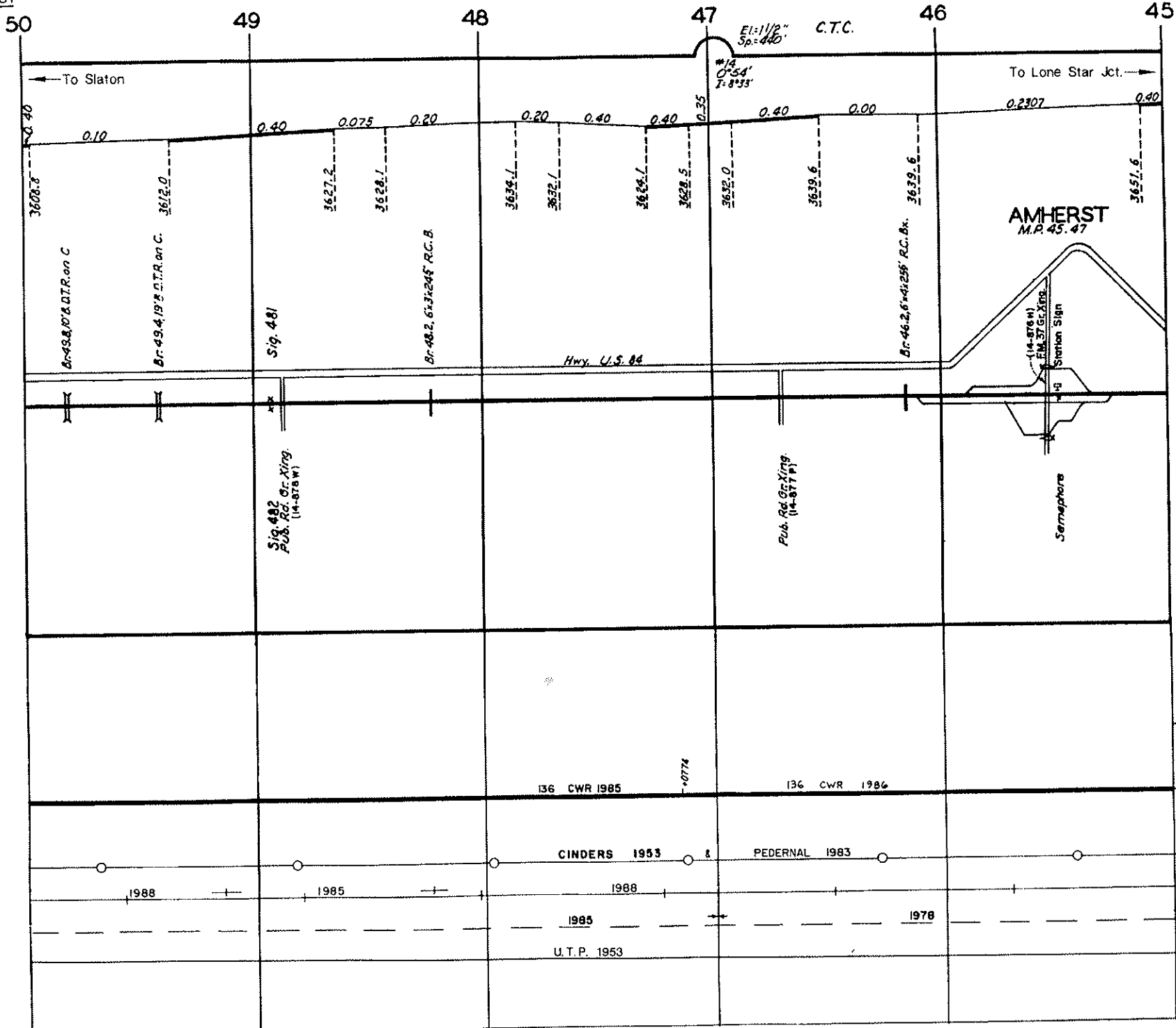
CINDERS 1953

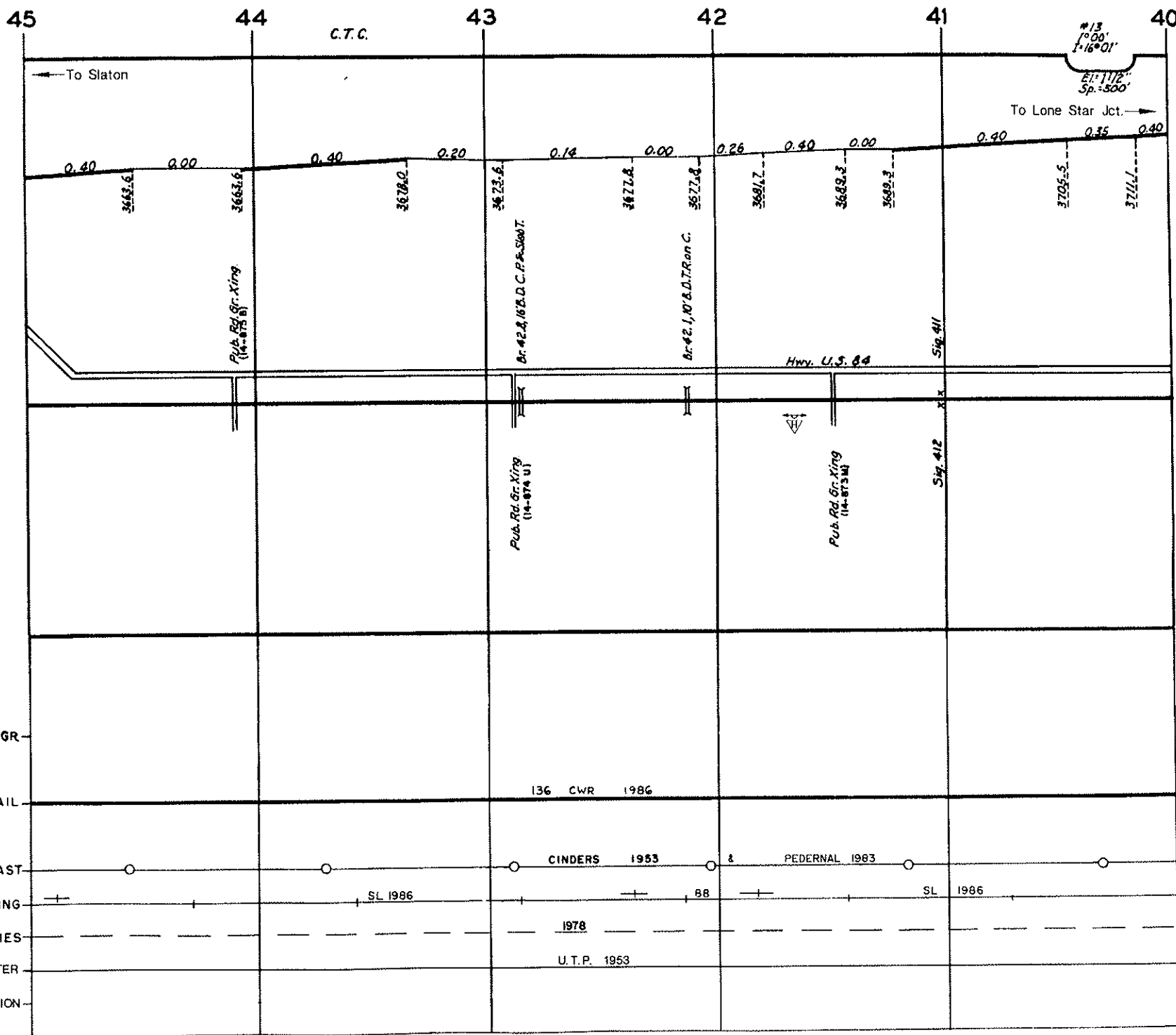
FEDERAL 1983 &  
CINDERS 1953

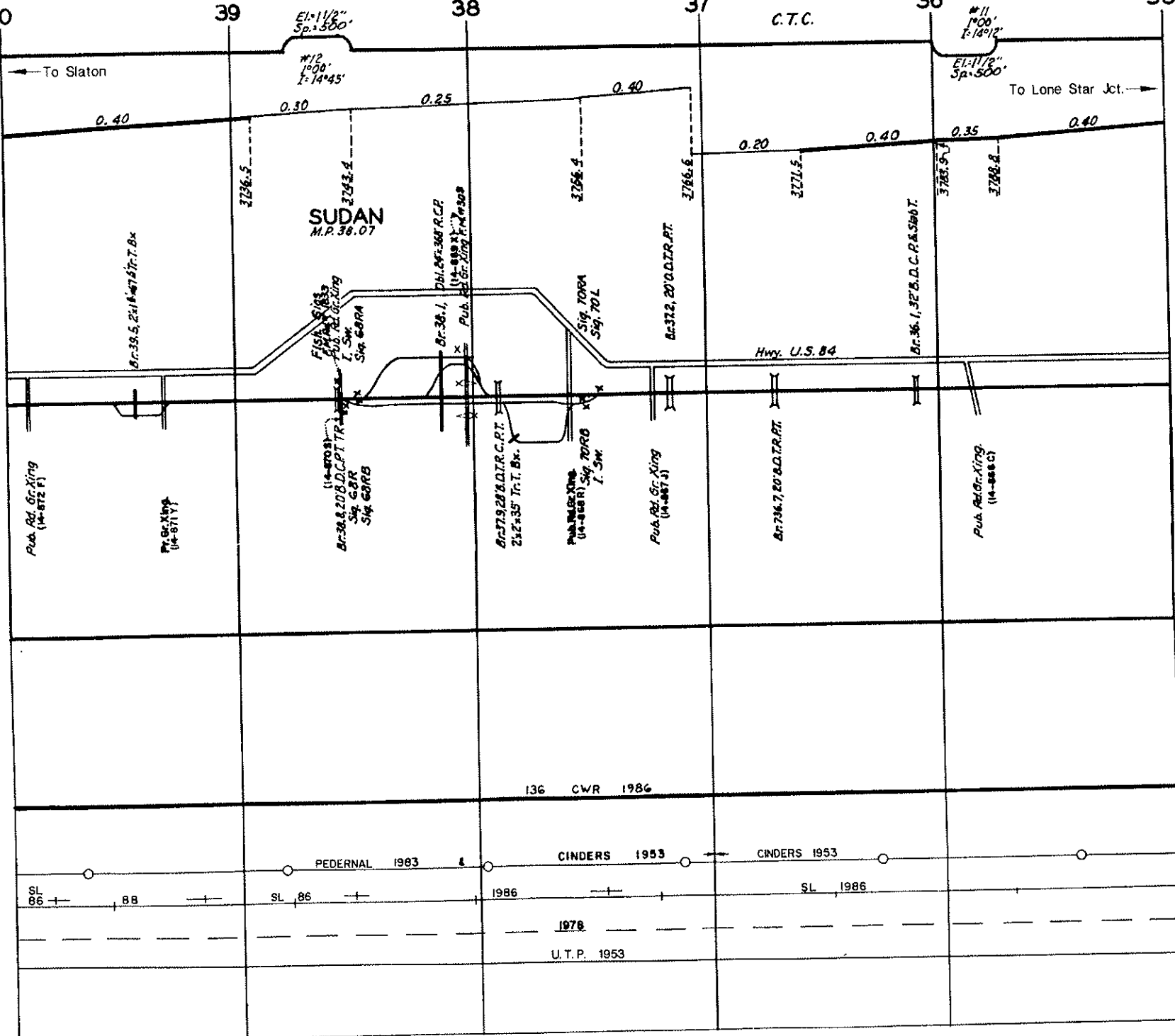
1988

1995

U.T.P. 1953

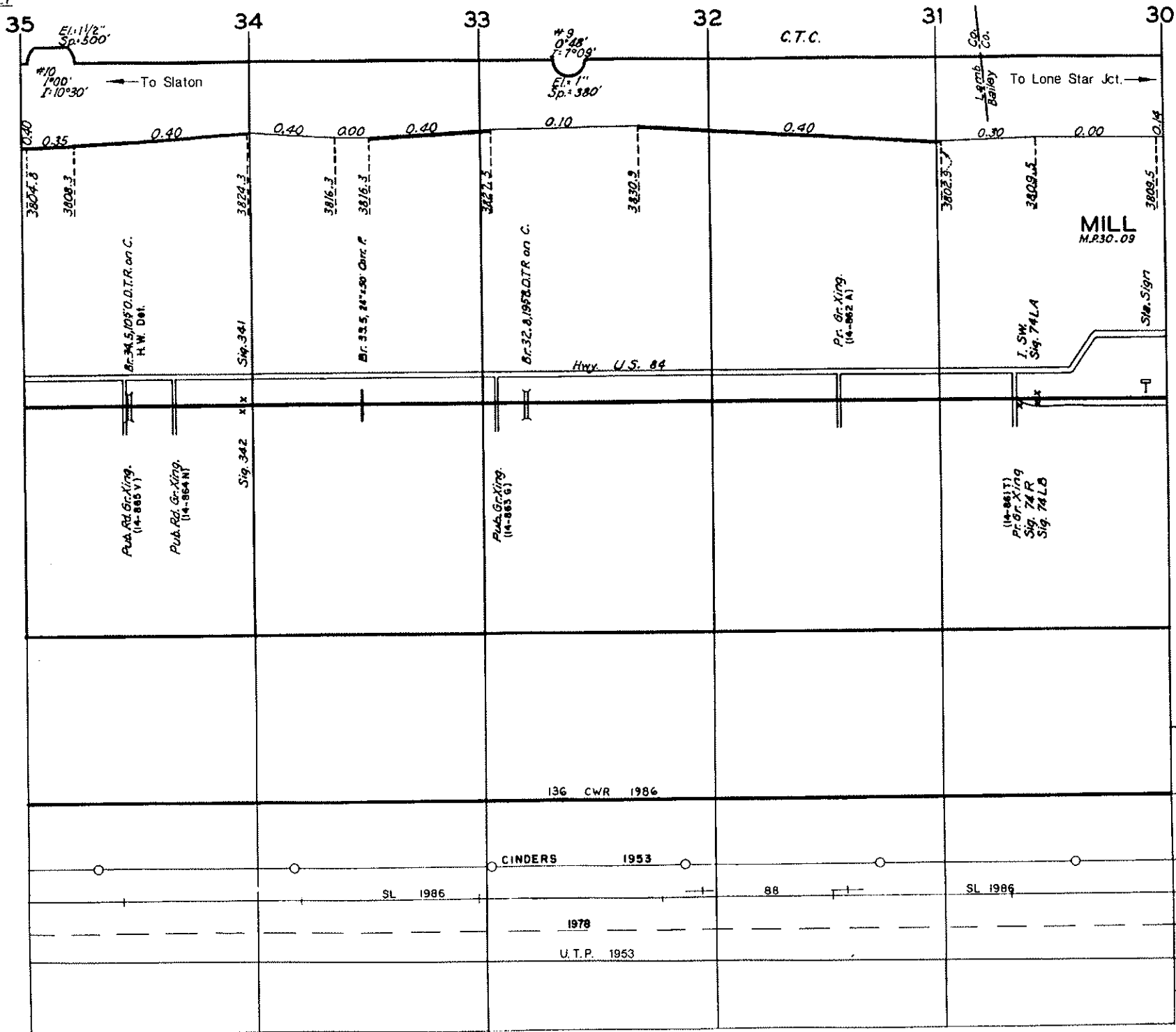


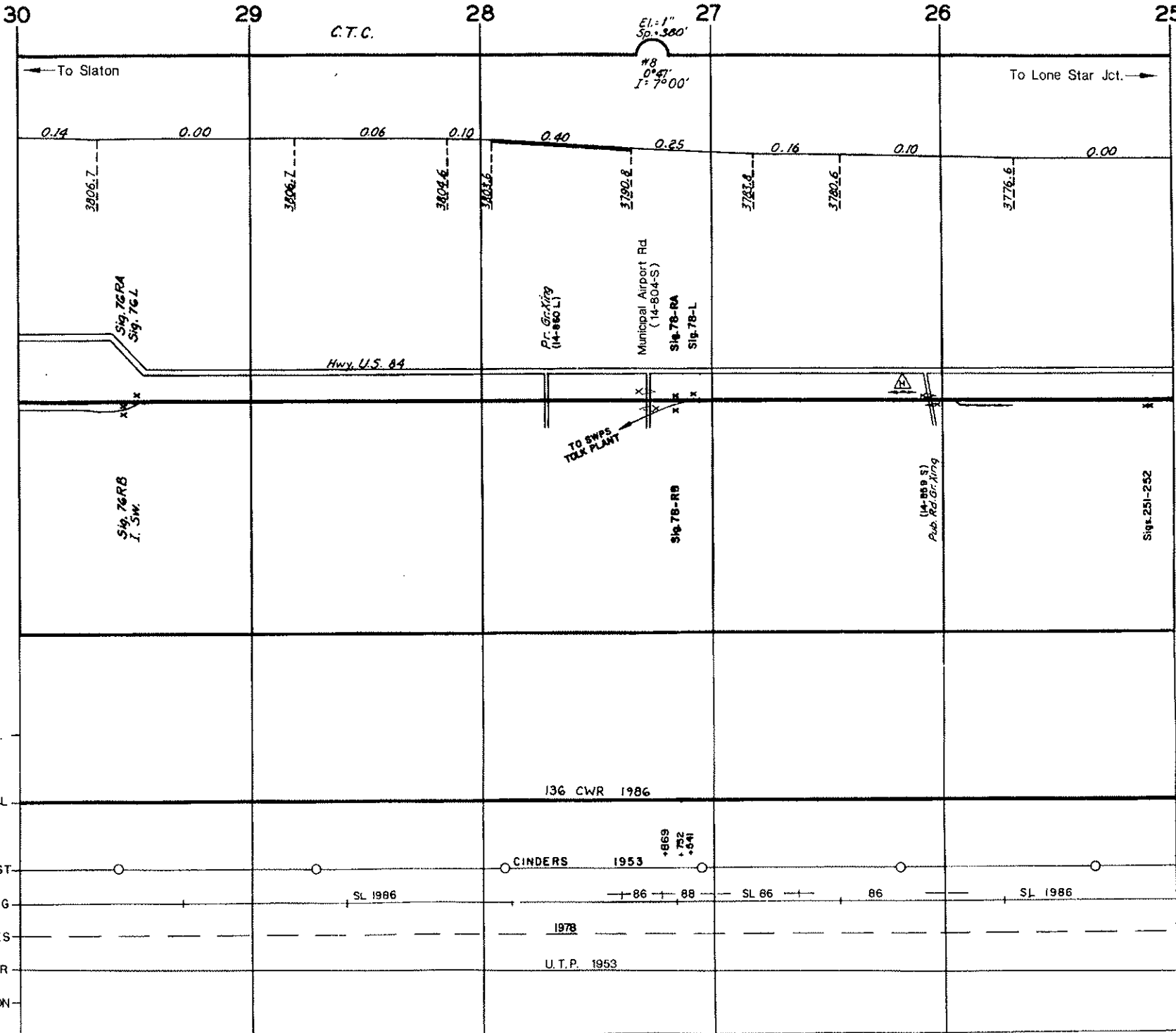


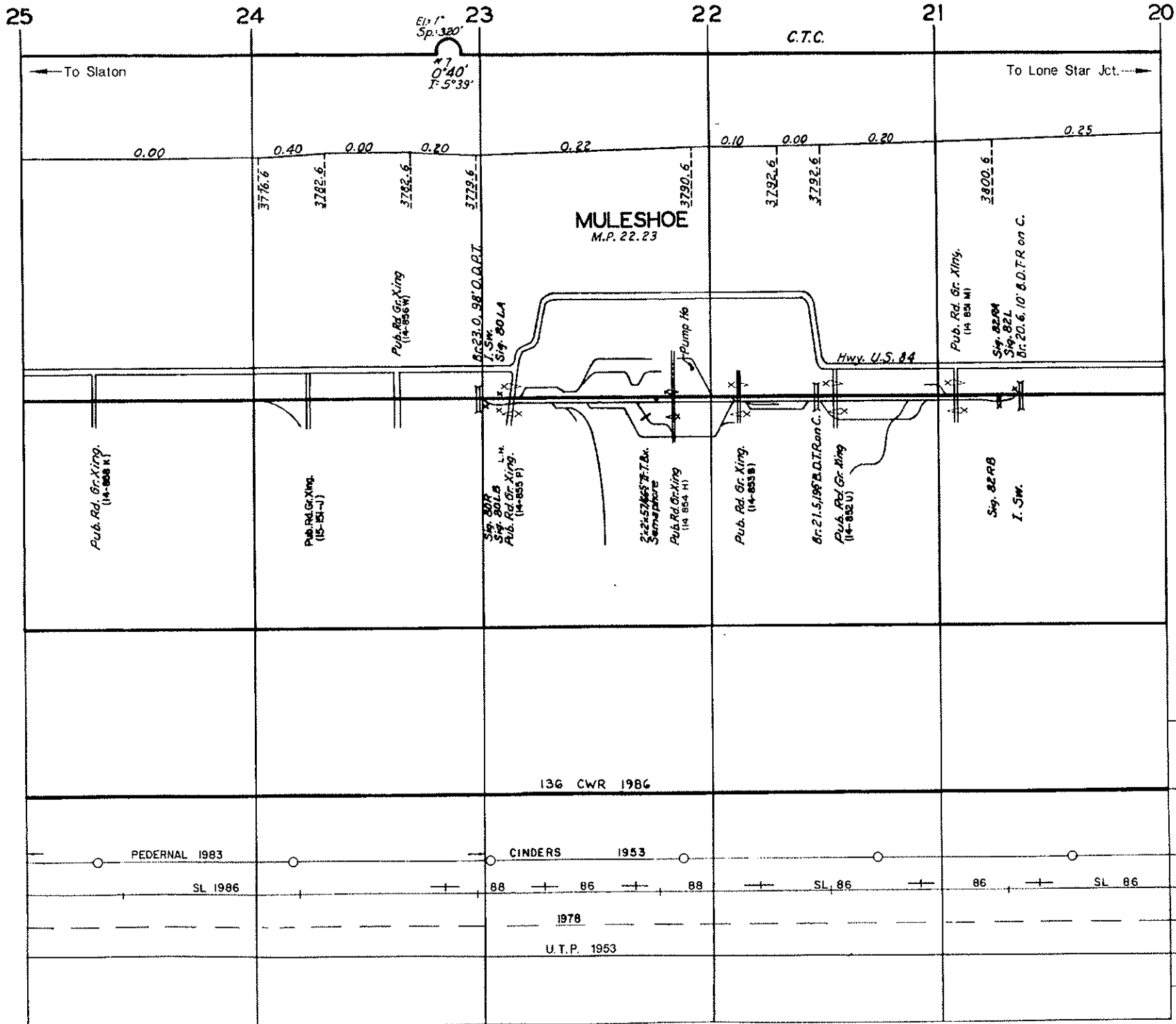


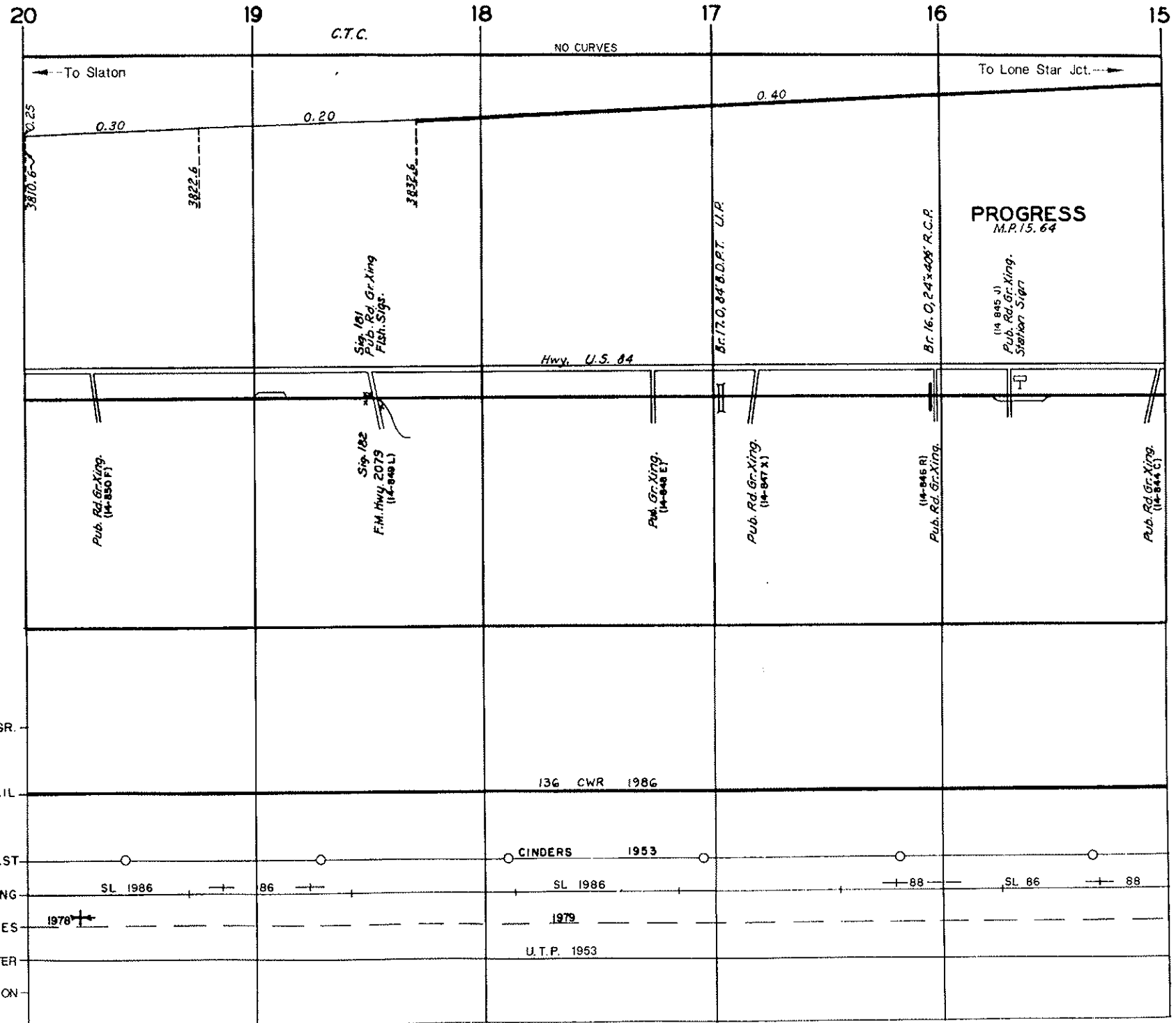


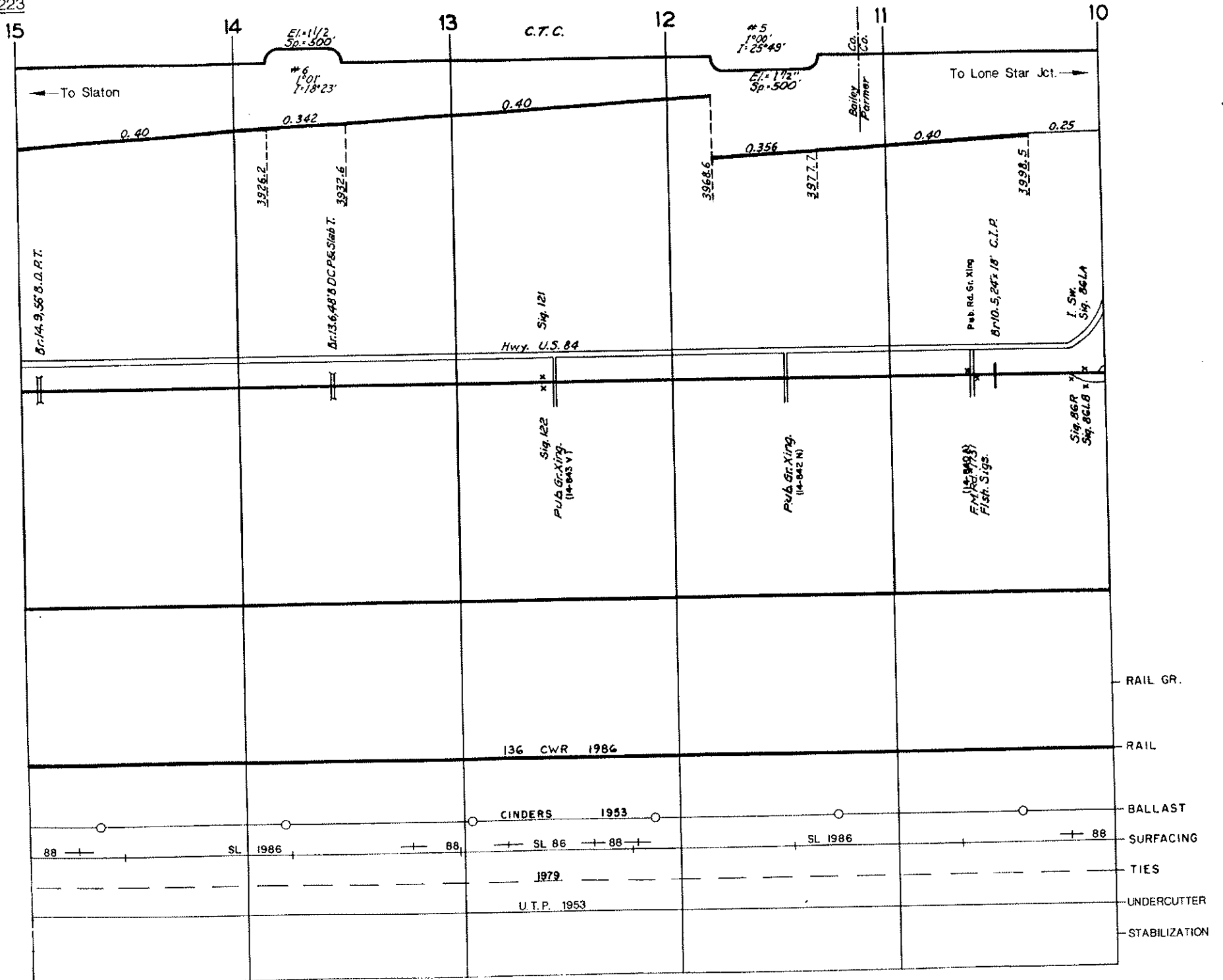
*Intentionally Blank*

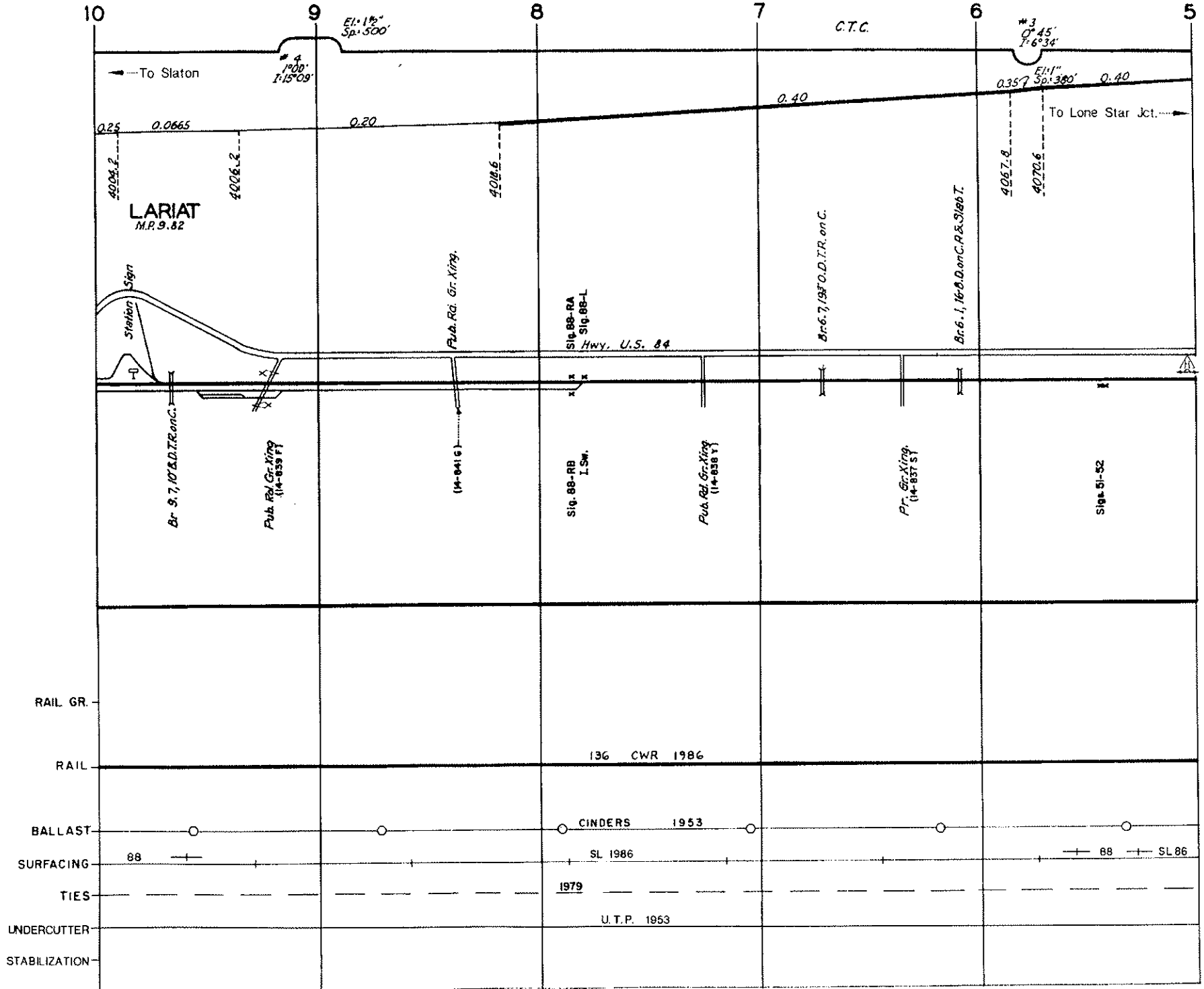


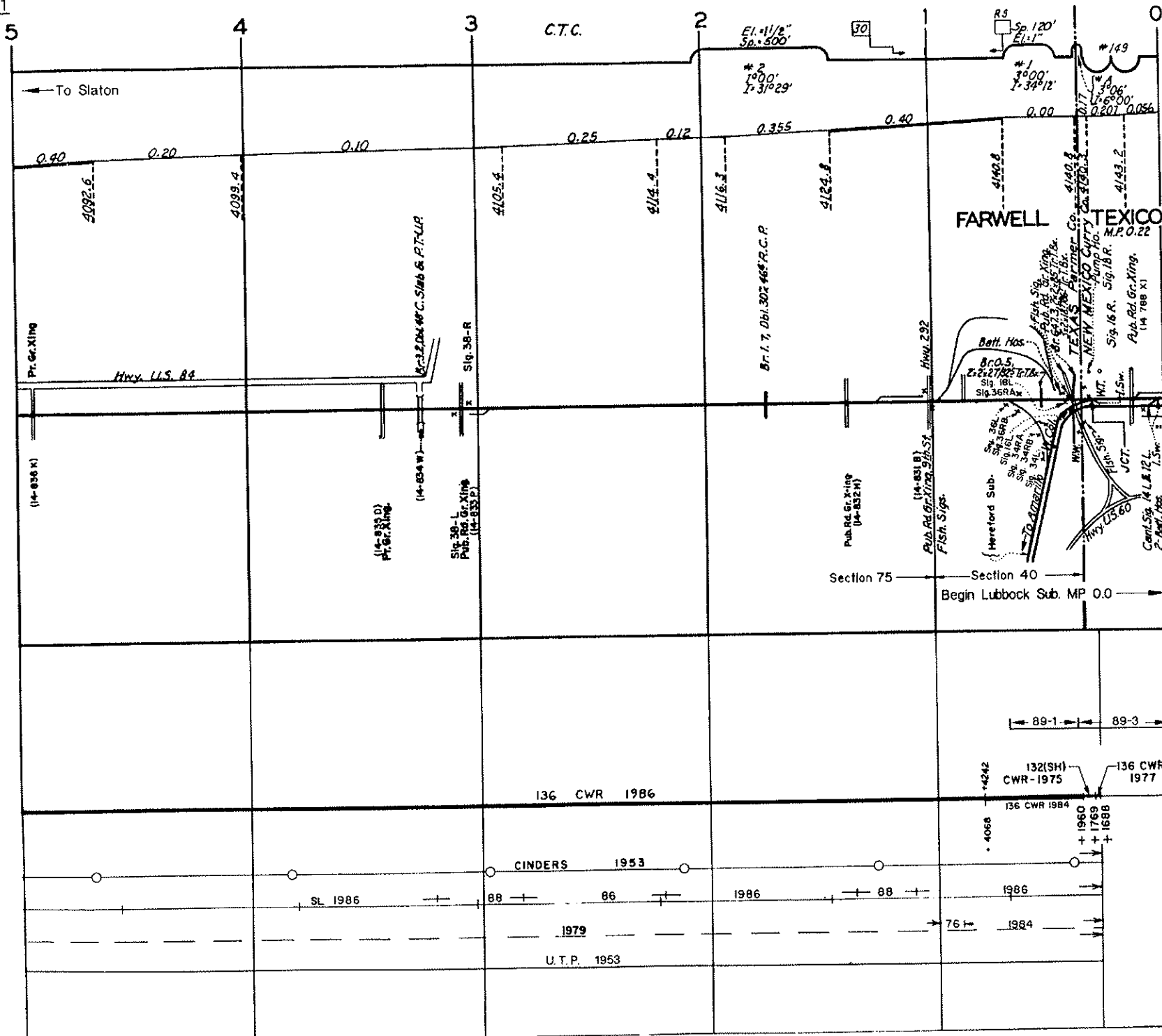














# Lubbock Subdivision

Farwell (M.P. 1.0) to Lubbock (M.P. 88.6 = 673.5)  
to Slaton (M.P. 689.2)

*Intentionally Blank*