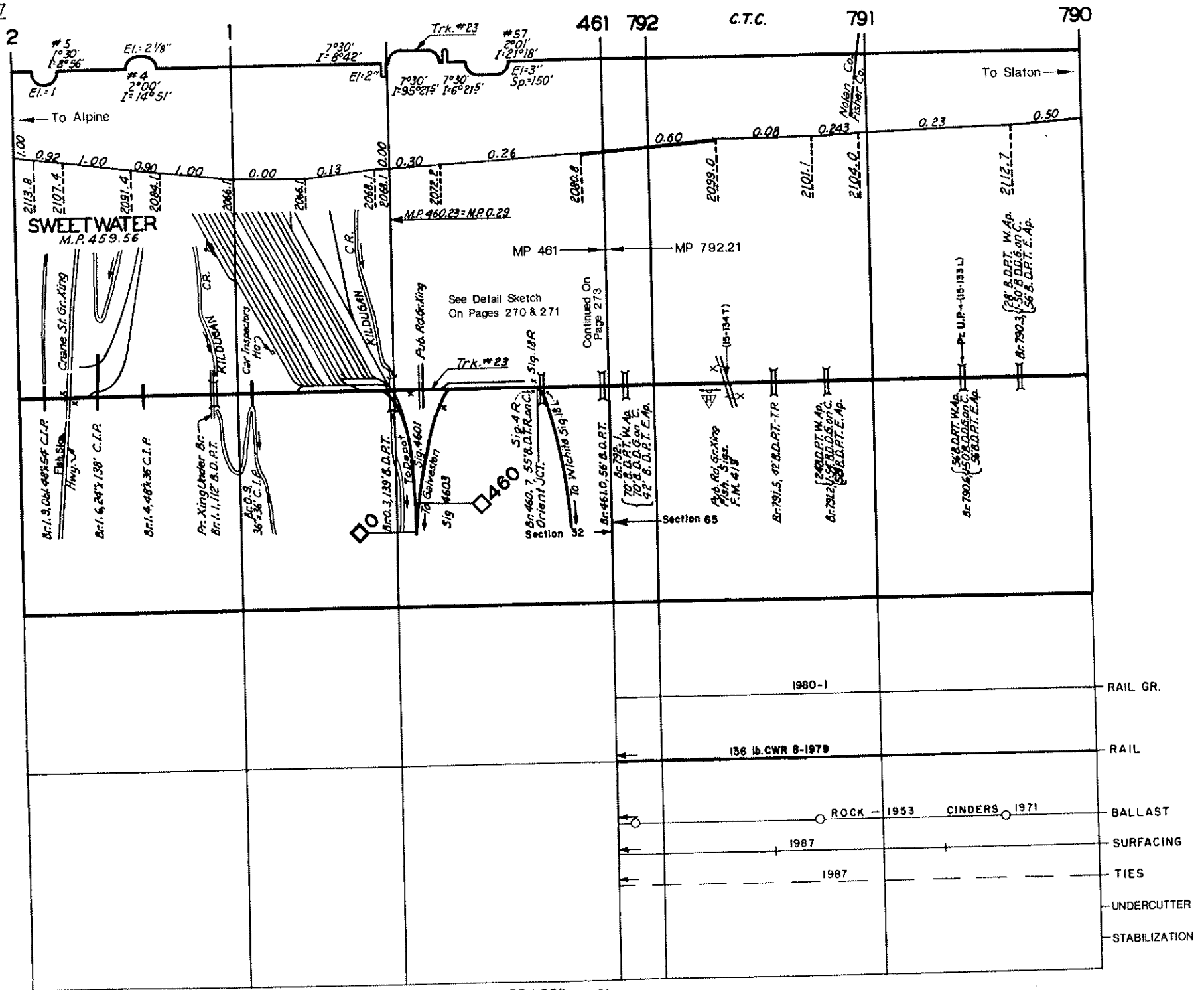
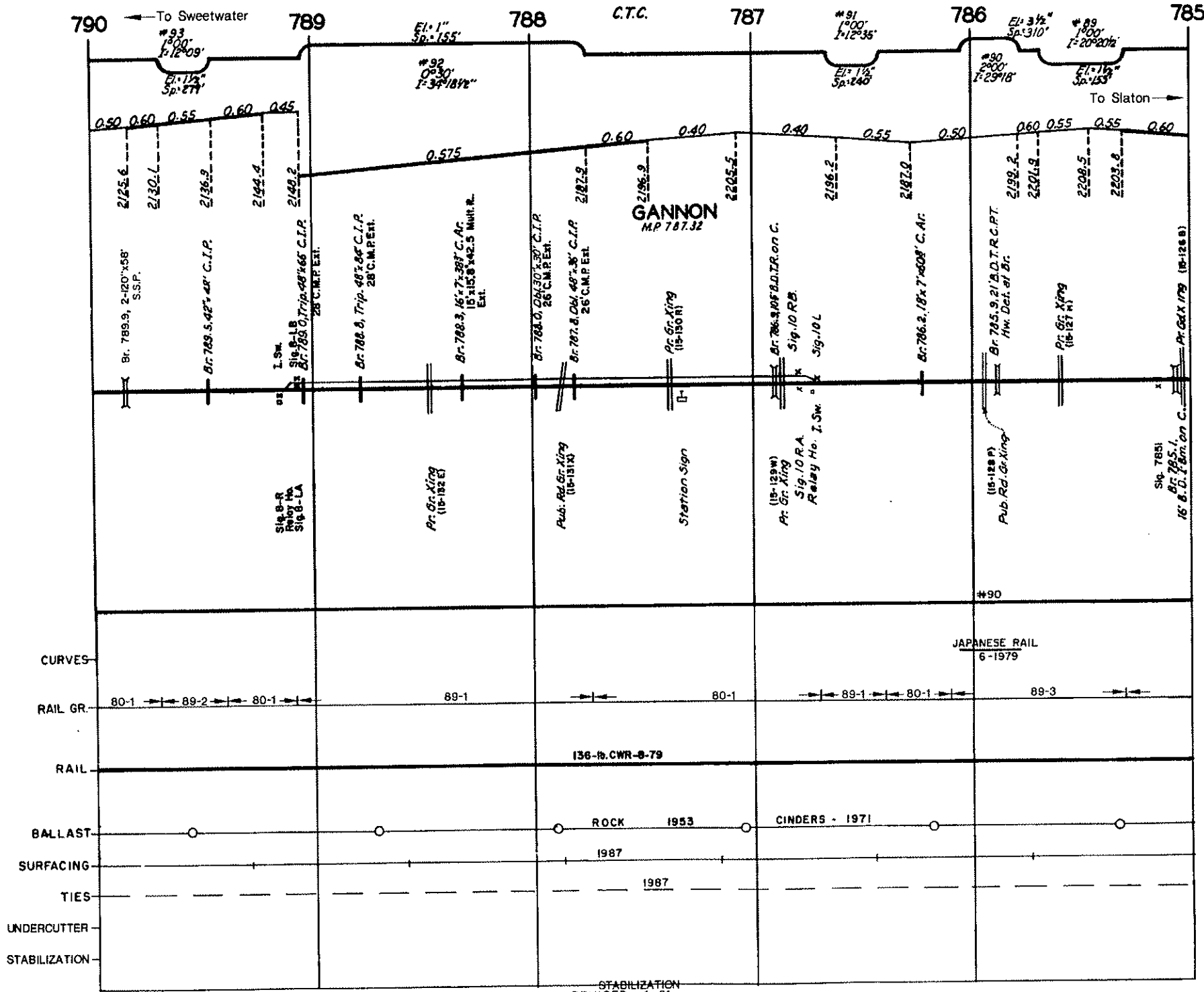
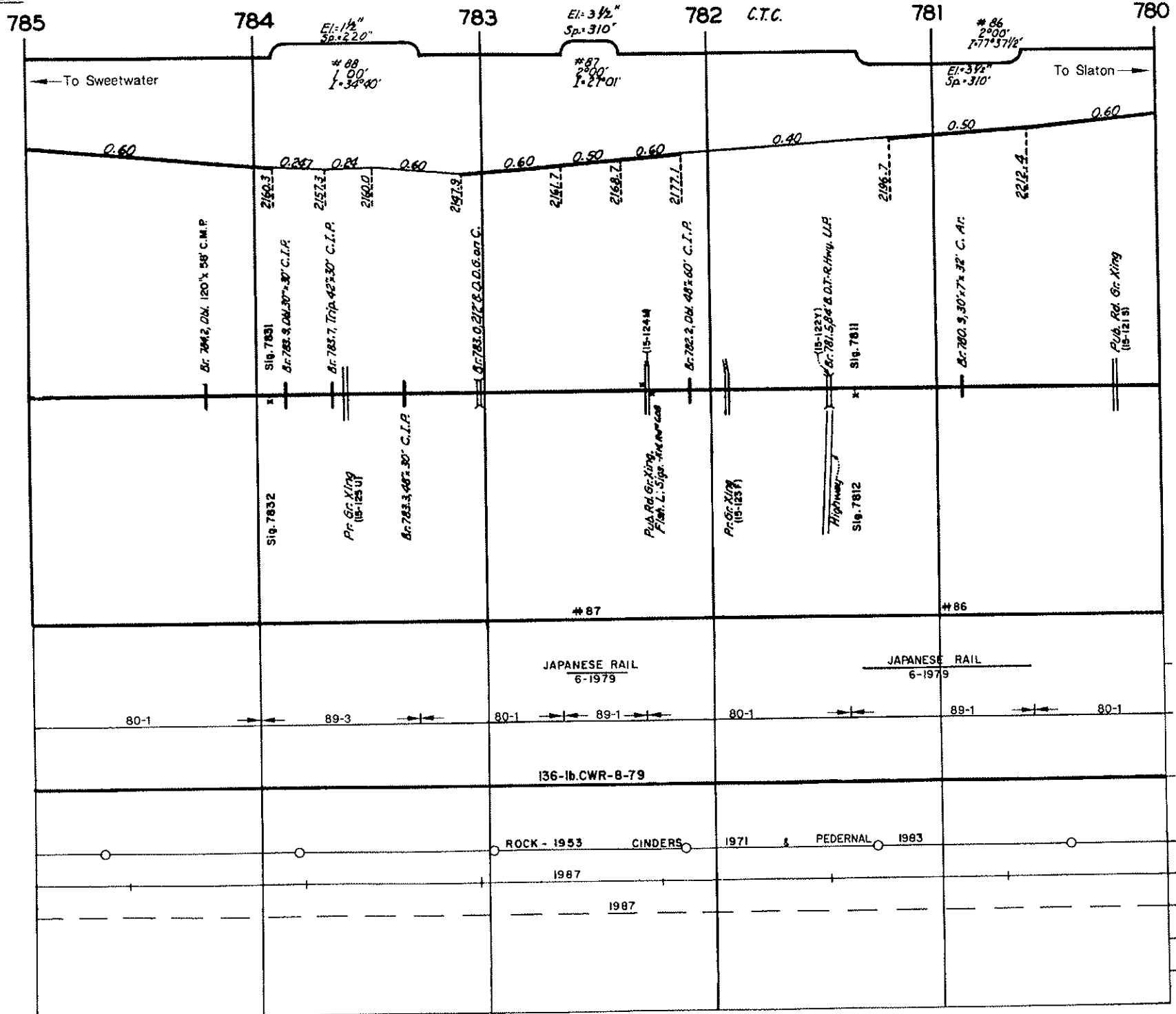


Intentionally Blank





STABILIZATION
REVISED 1-91



775

774

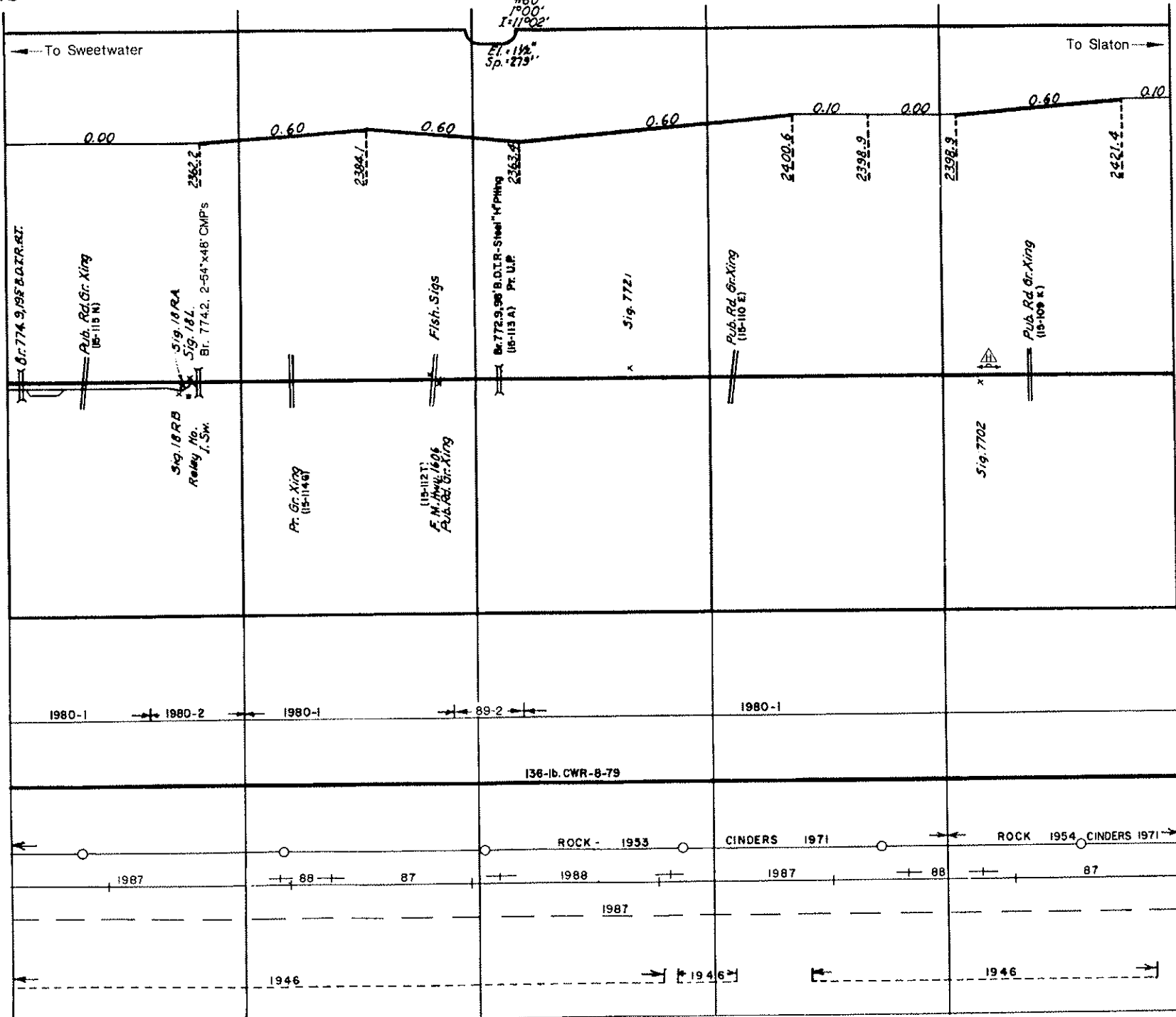
773

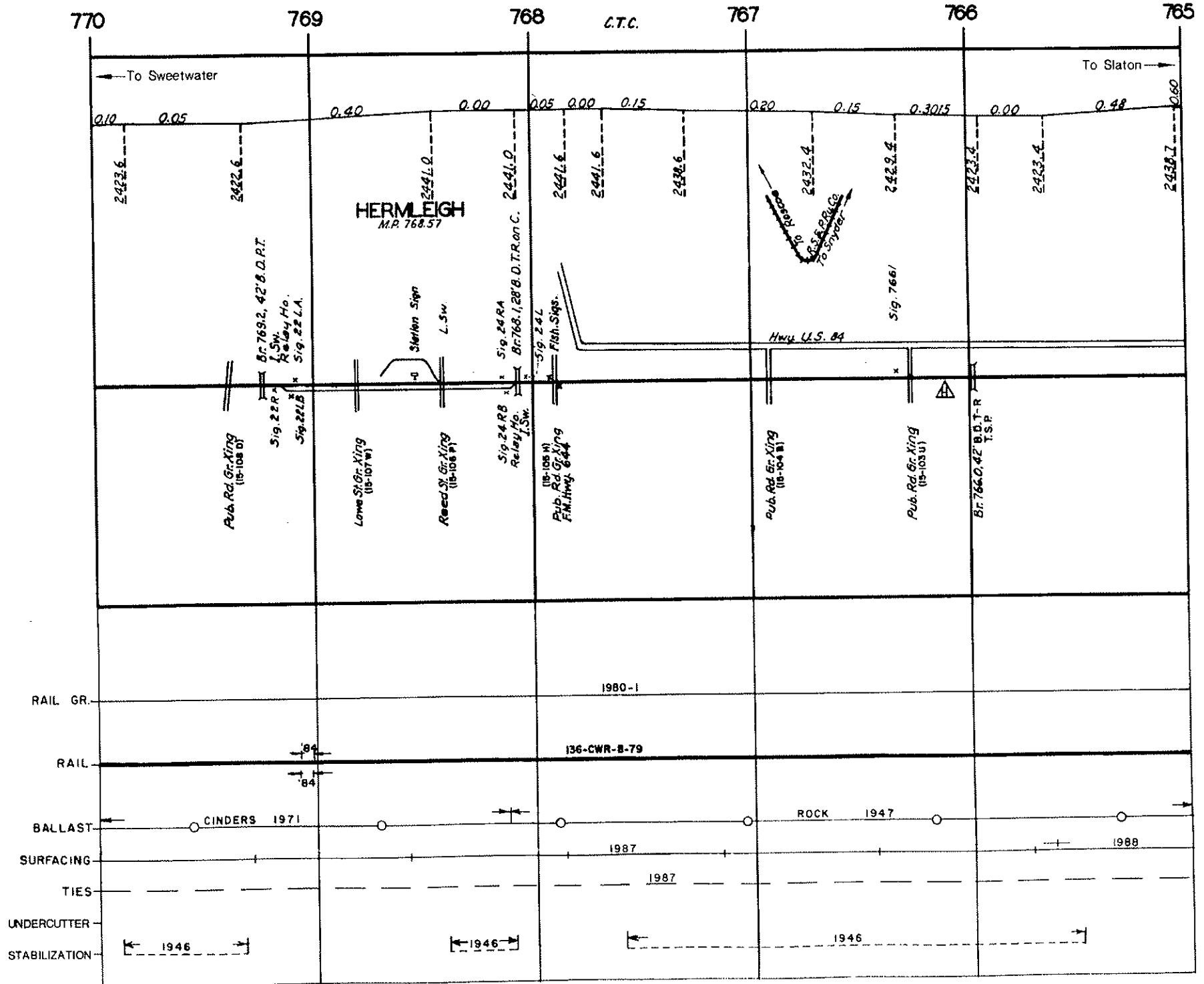
C.T.C.

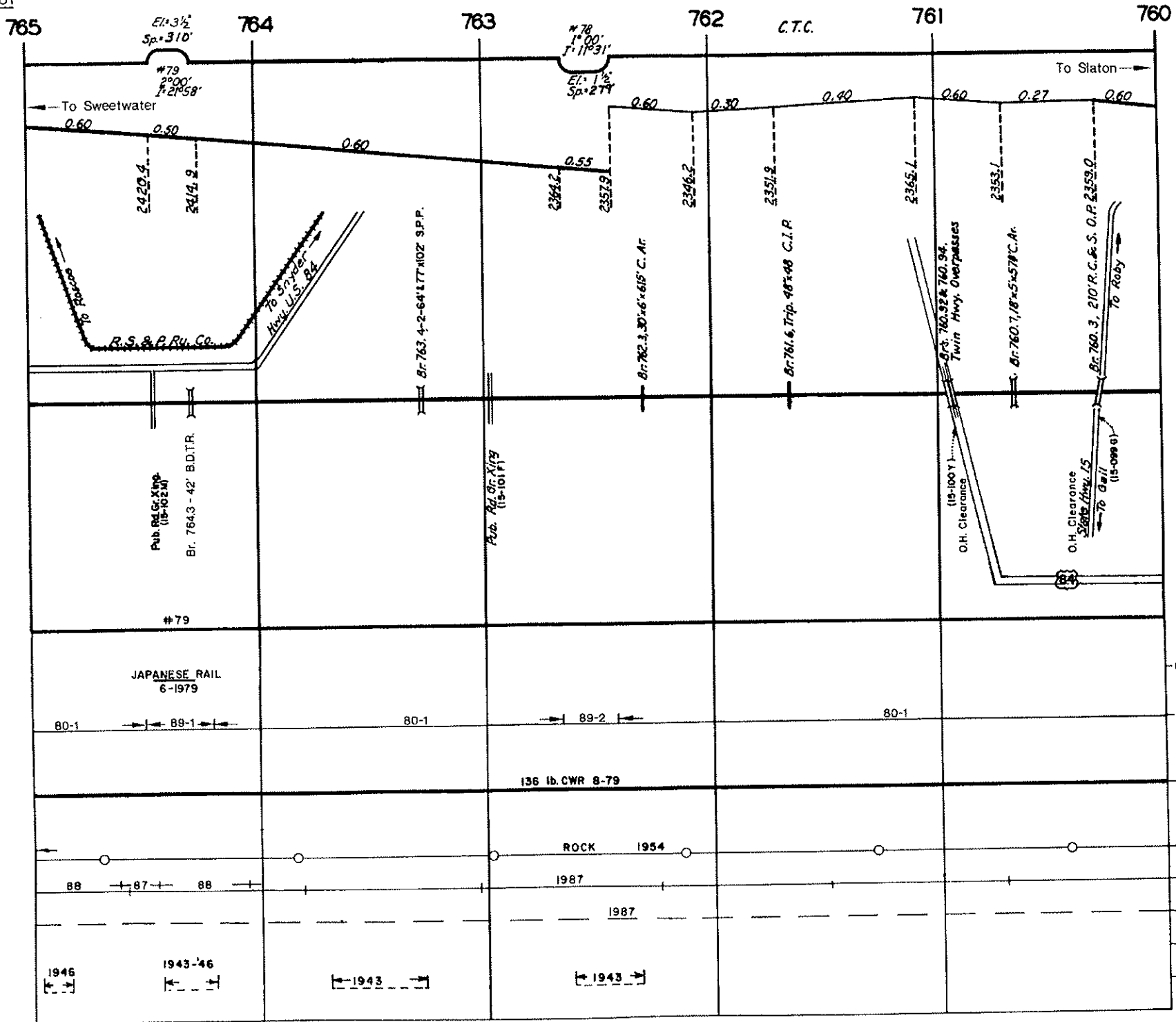
772

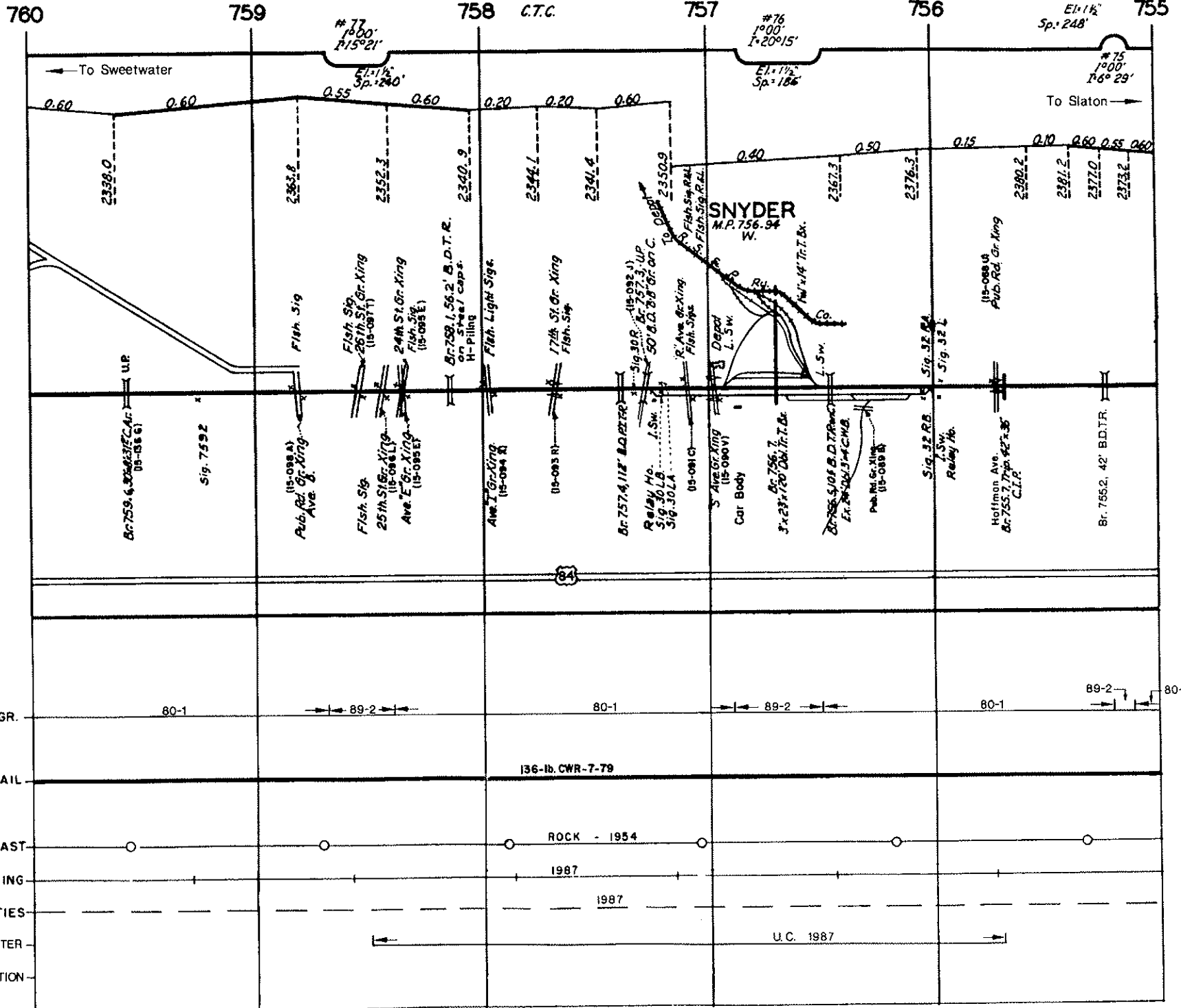
771

770









755

754

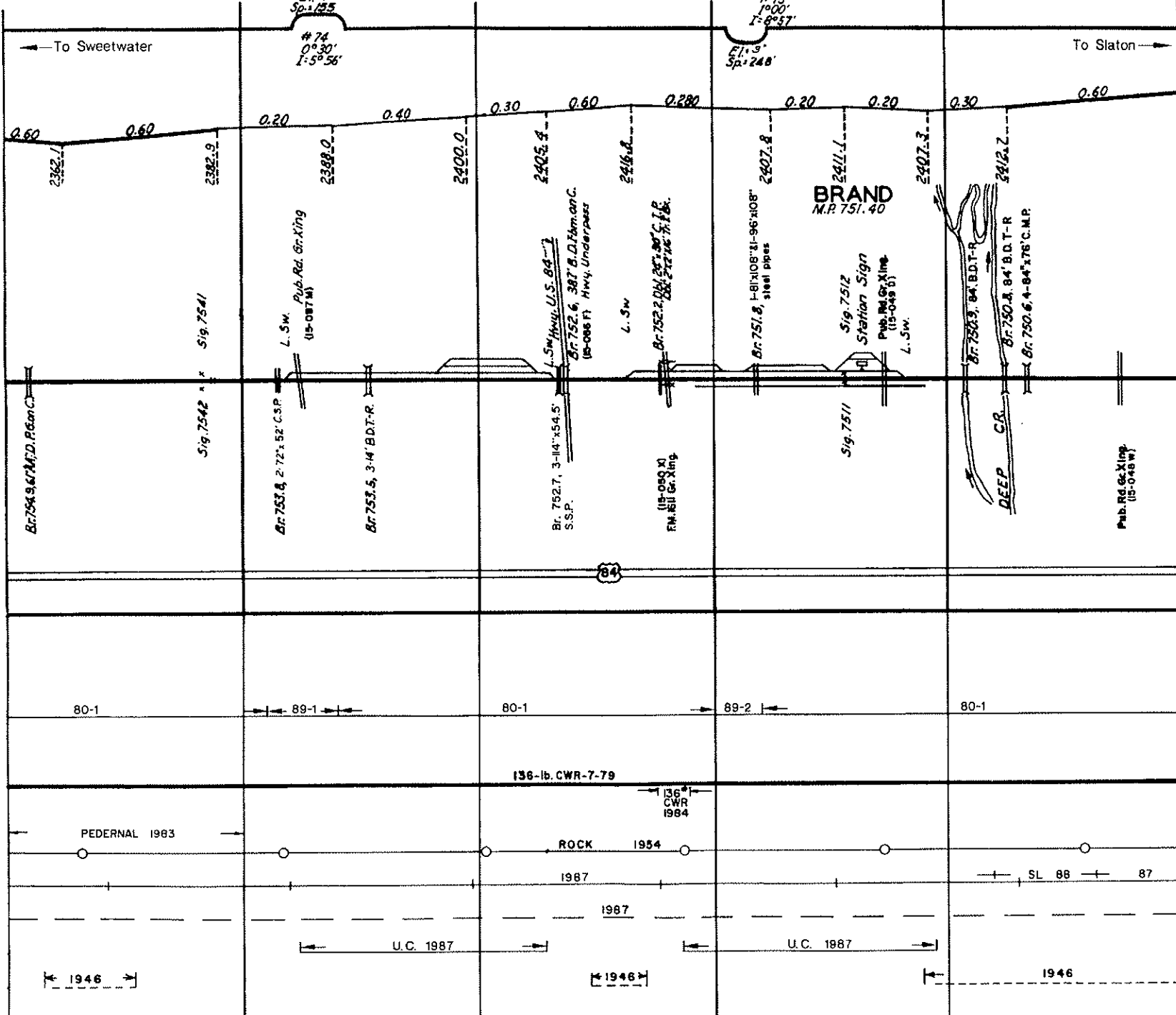
753

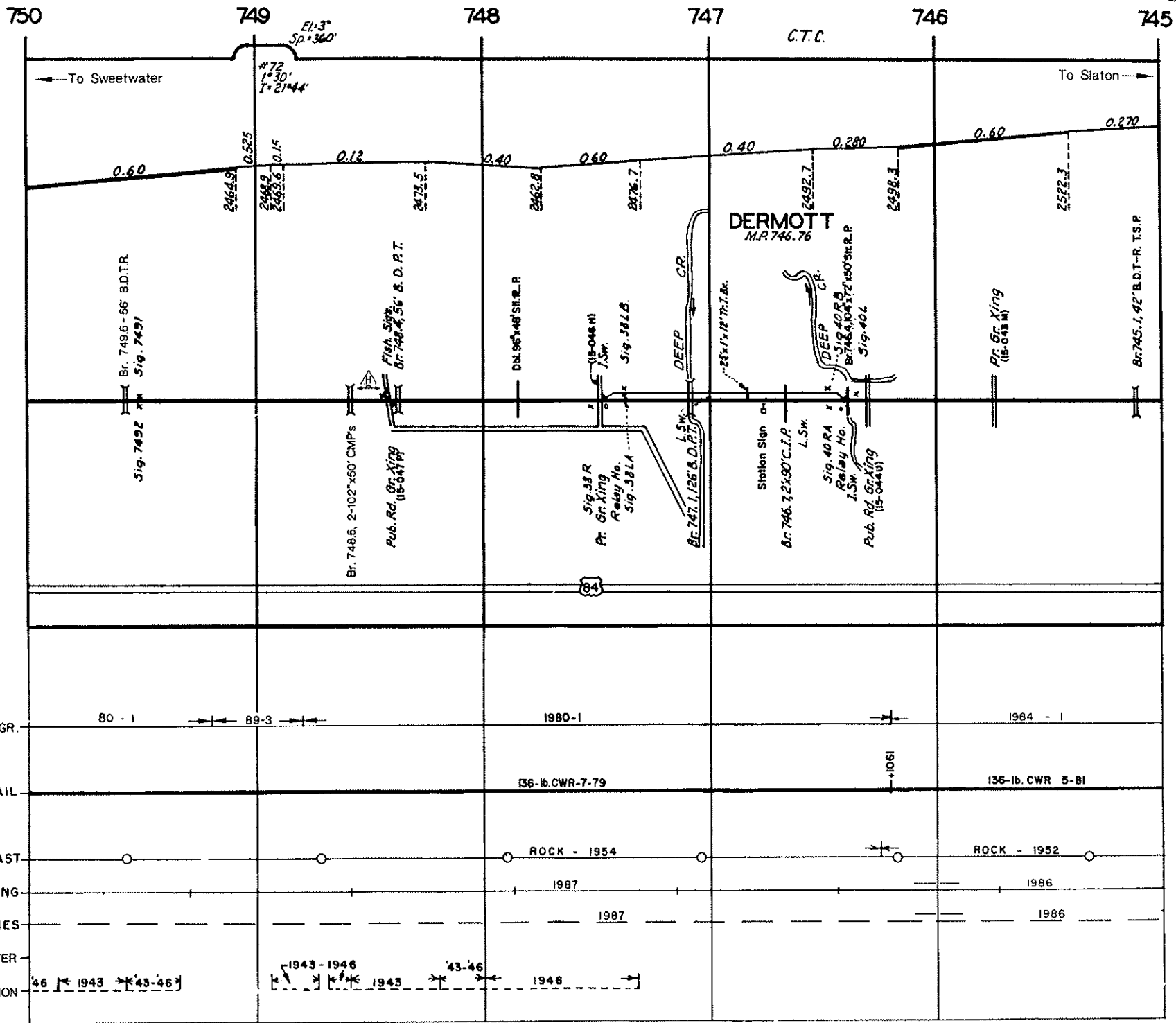
C.T.C.

752

751

750





745

744

743

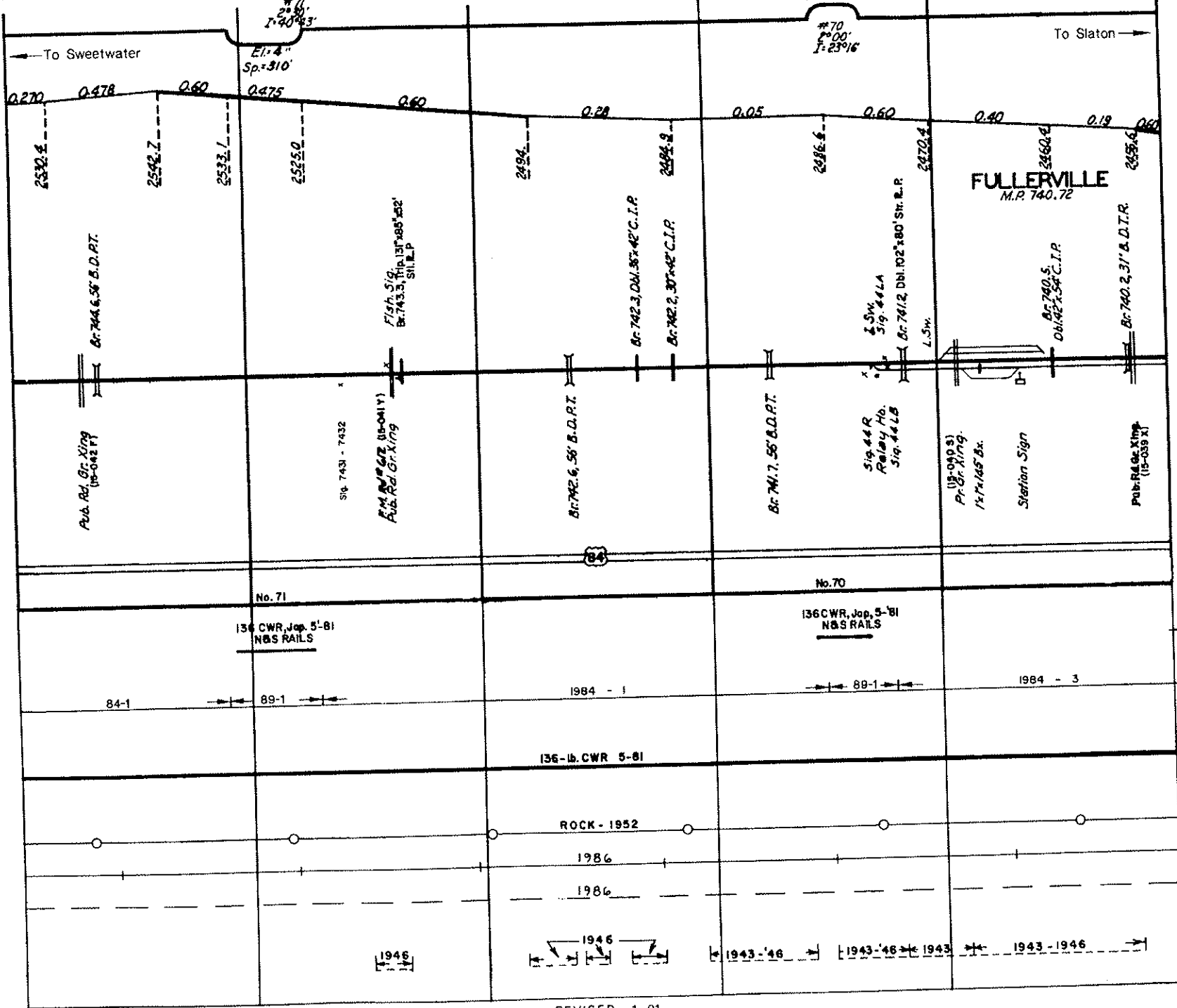
C.T.C.

742

EI: 4" Sp: 360'

741

740



FULLERVILLE
M.P. 740.72

Pub. Rd. Gr. King
(15-042 X)

Sig. 7431 - 7432

Pub. Rd. Gr. King
(15-011 Y)

B.C. 742.6, 56' B.D.P.T.

B.C. 741.7, 56' B.D.P.T.

Sig. 44 R
Relay No.
Sig. 44 L B

(15-090 S)
Pt. Gr. King
(15-145 B)

Station Sign

Pub. Rd. Gr. King
(15-038 X)

No. 71

136 CWR, Jap. 5-81
N&S RAILS

84-1

89-1

1984 - 1

No. 70

136 CWR, Jap. 5-81
N&S RAILS

89-1

1984 - 3

136-lb. CWR 5-81

ROCK - 1952

1986

1986

1946

1946

1943-'46

1943-'46

1943

1943 - 1946

SR CURVES NR

RAIL GR.

RAIL

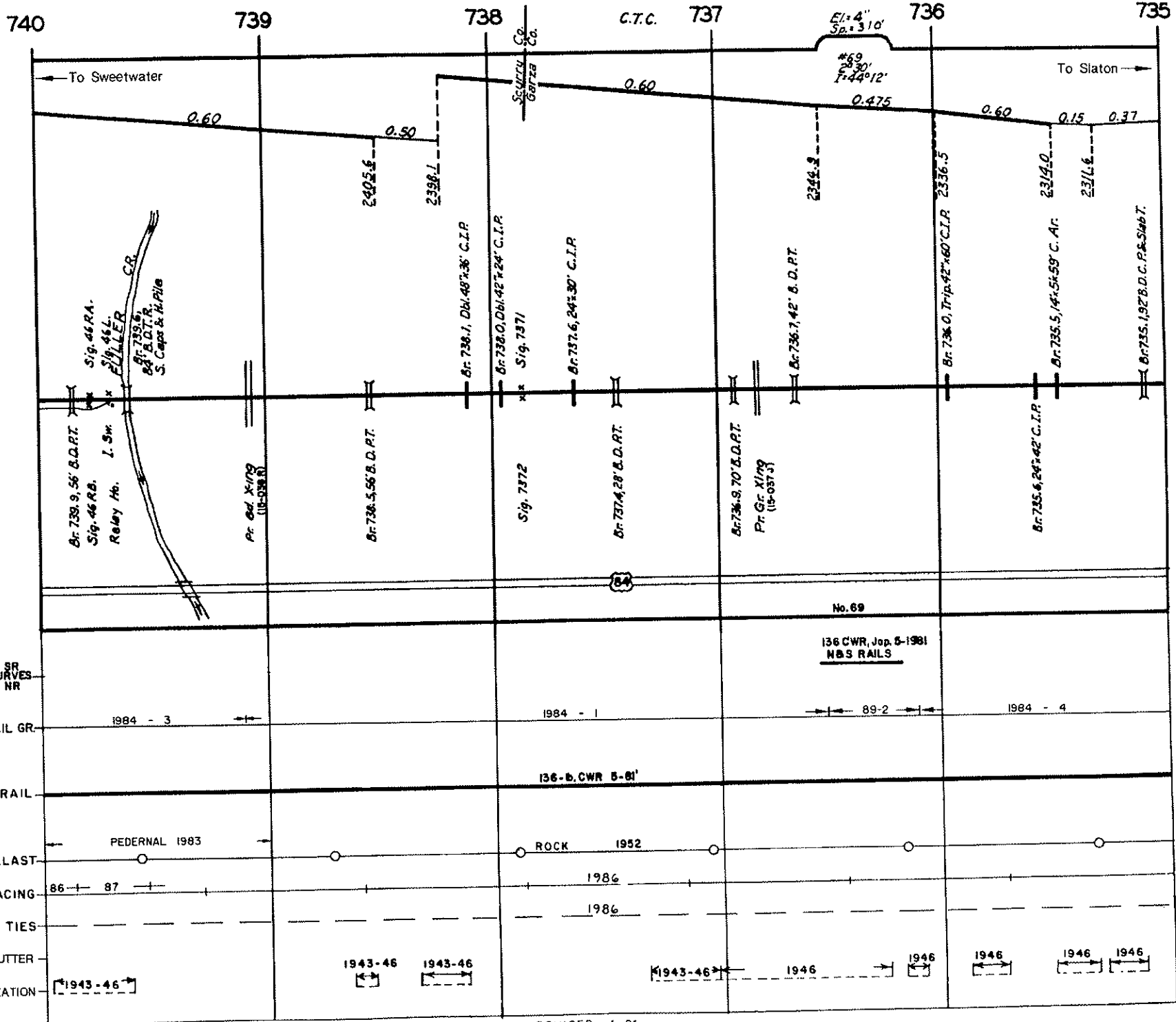
BALLAST

SURFACING

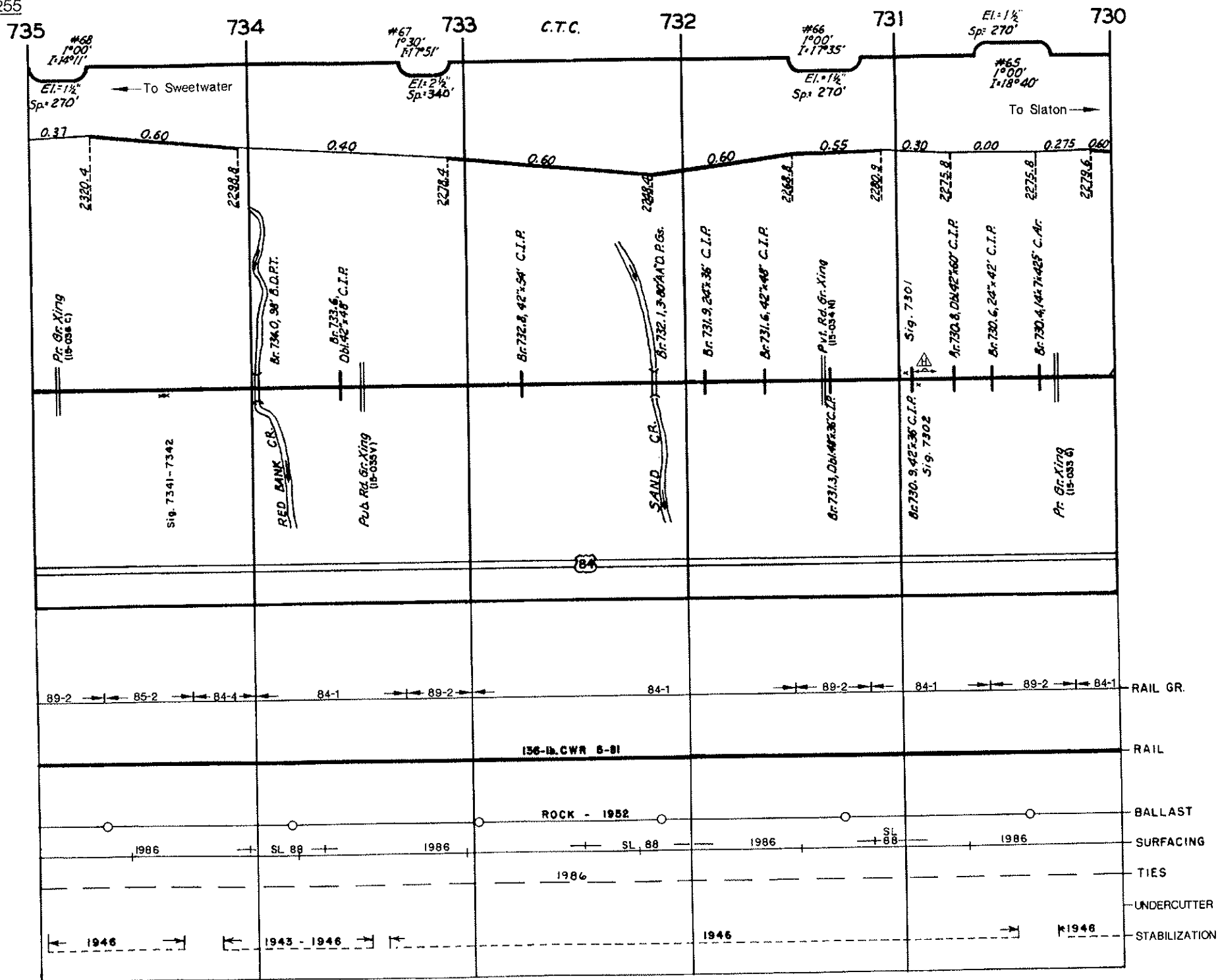
TIES

UNDERCUTTER

STABILIZATION



STABILIZATION	[1943-46]	[1943-46]	[1943-46]	[1943-46]	[1946]	[1946]	[1946]
UNDERCUTTER							
TIES							
SURFACING	86 - 87			1986			
BALLAST	PEDERNAL 1983		ROCK 1952				
RAIL			136-b. CWR 5-81'				
RAIL GR.	1984 - 3		1984 - 1		89-2		1984 - 4
SR CURVES NR							



730

729

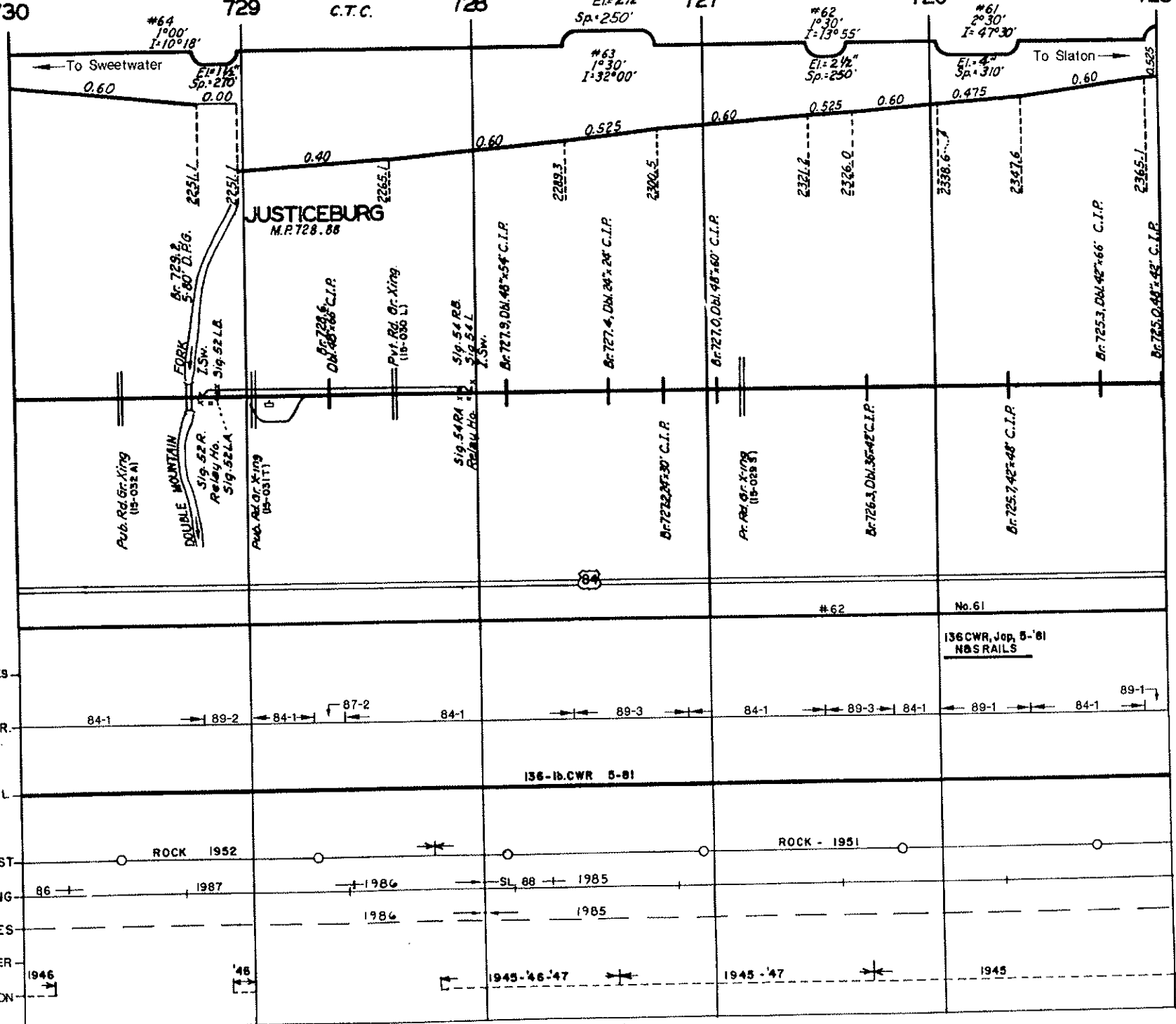
C.T.C.

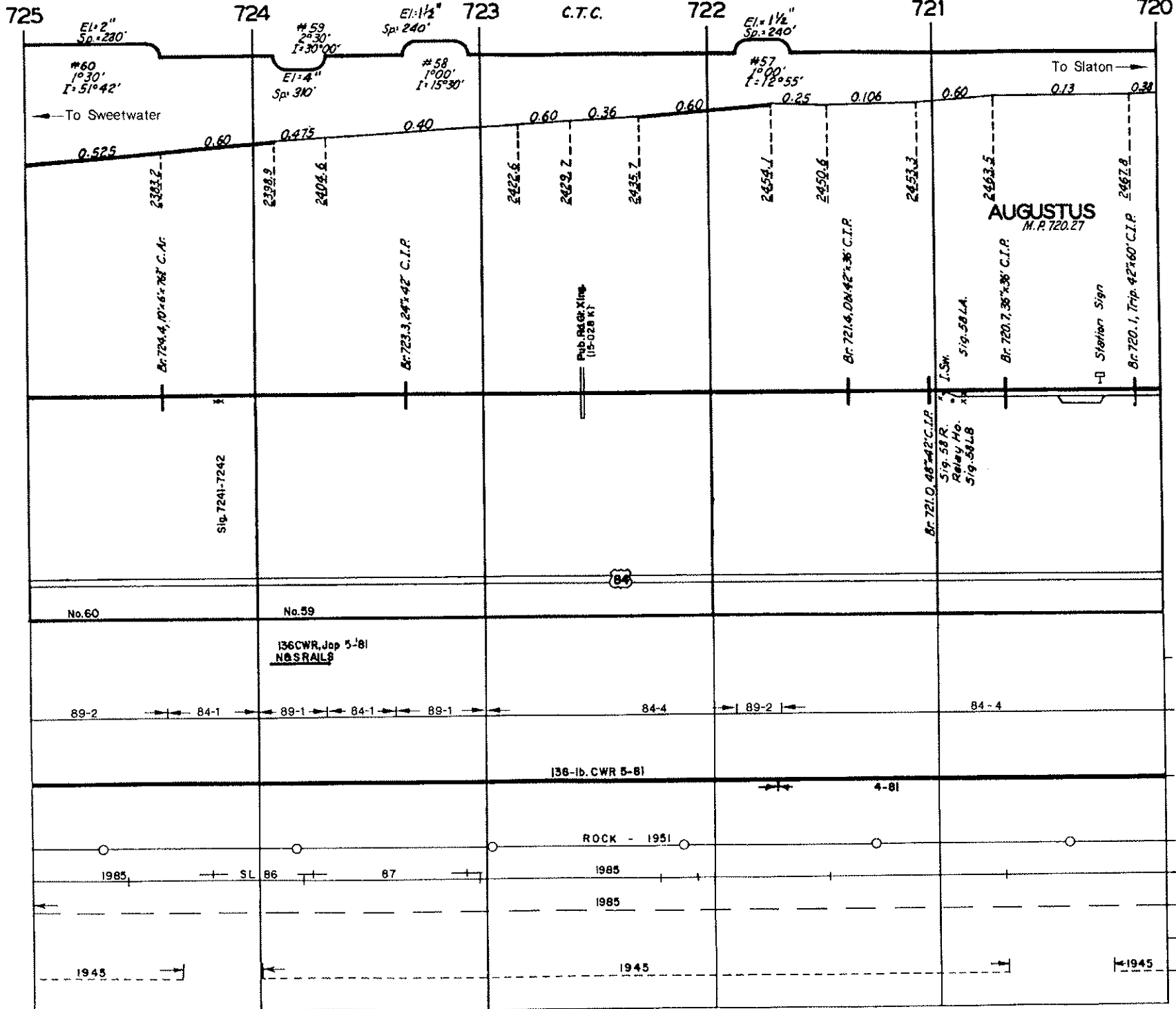
728

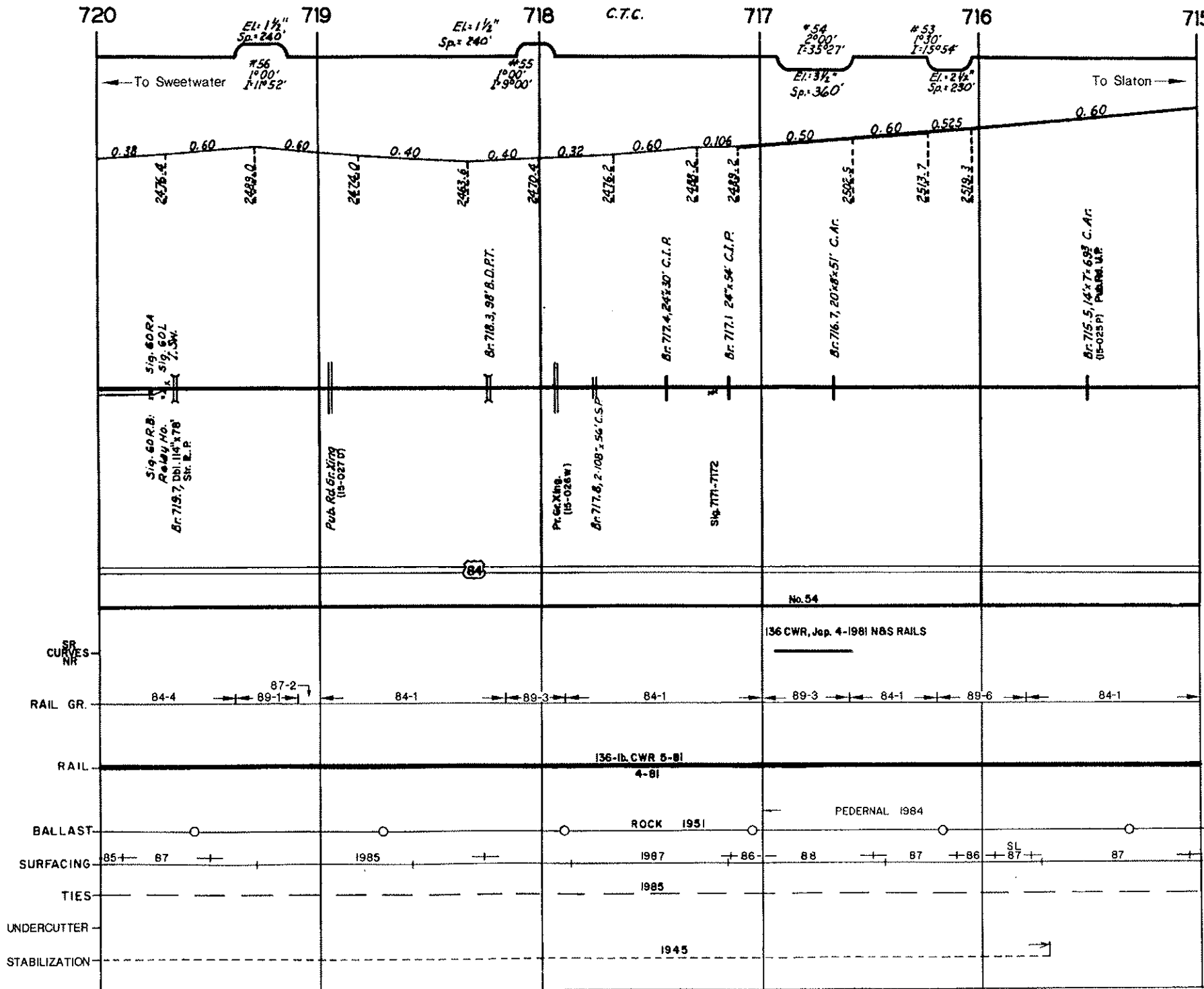
727

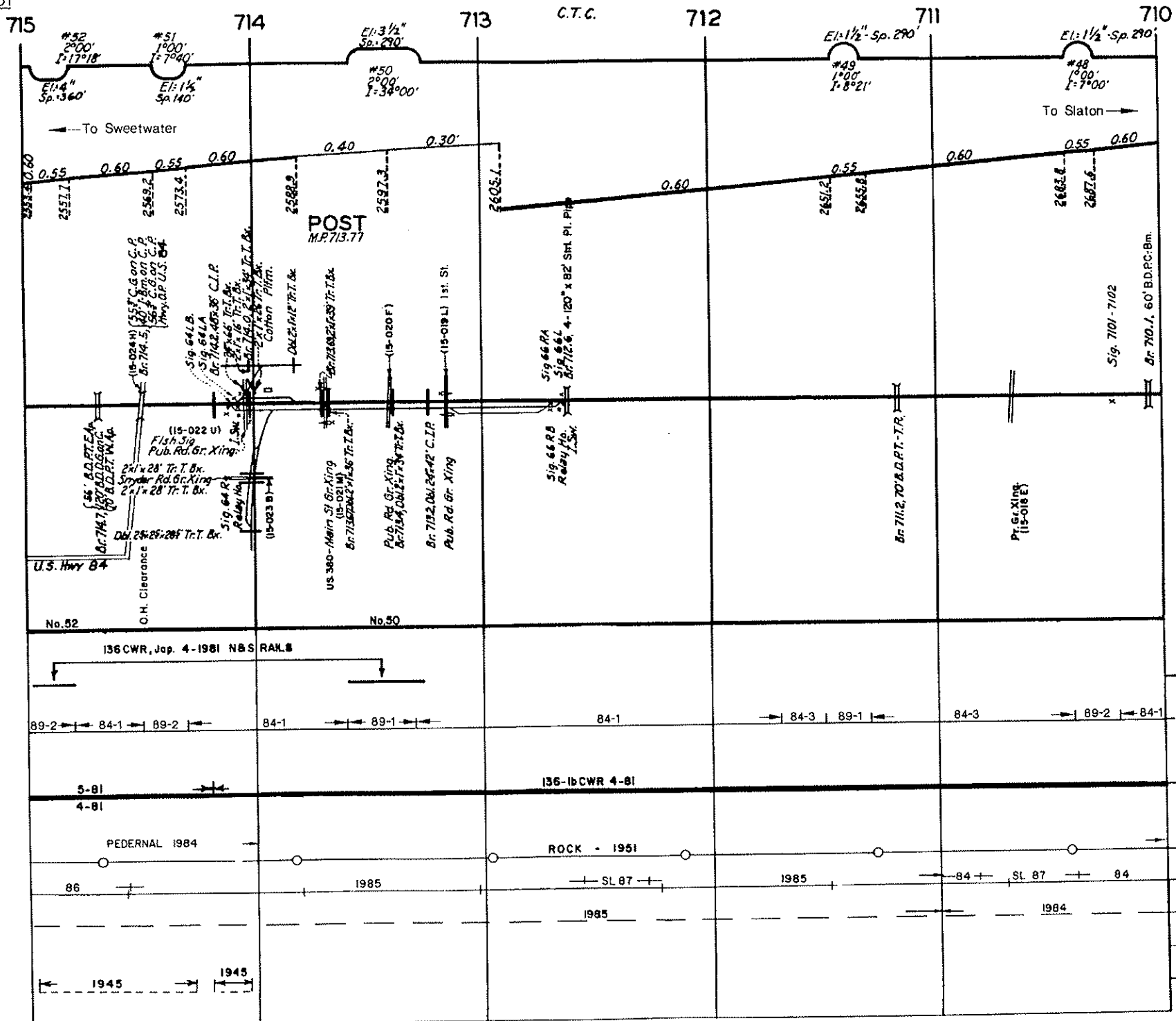
726

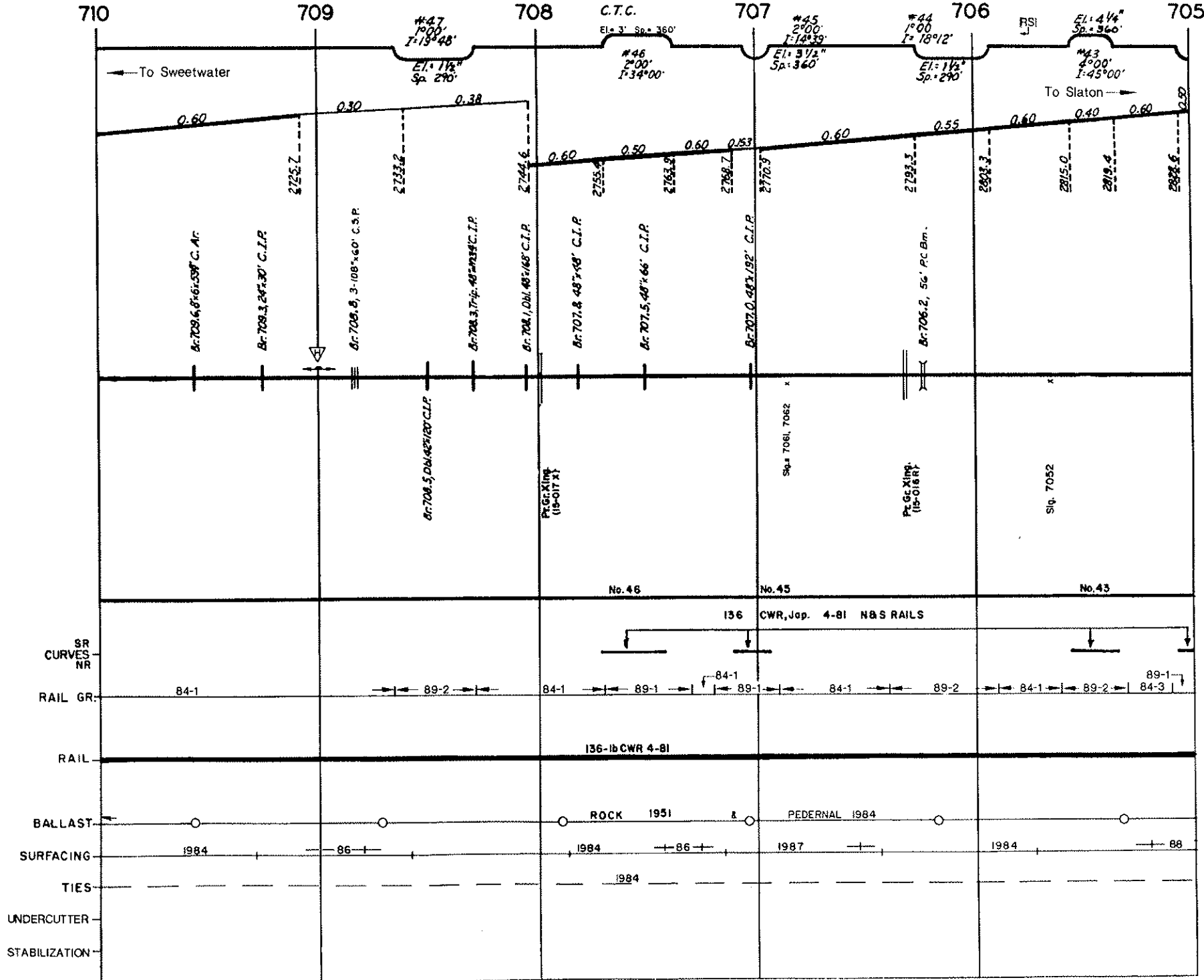
725

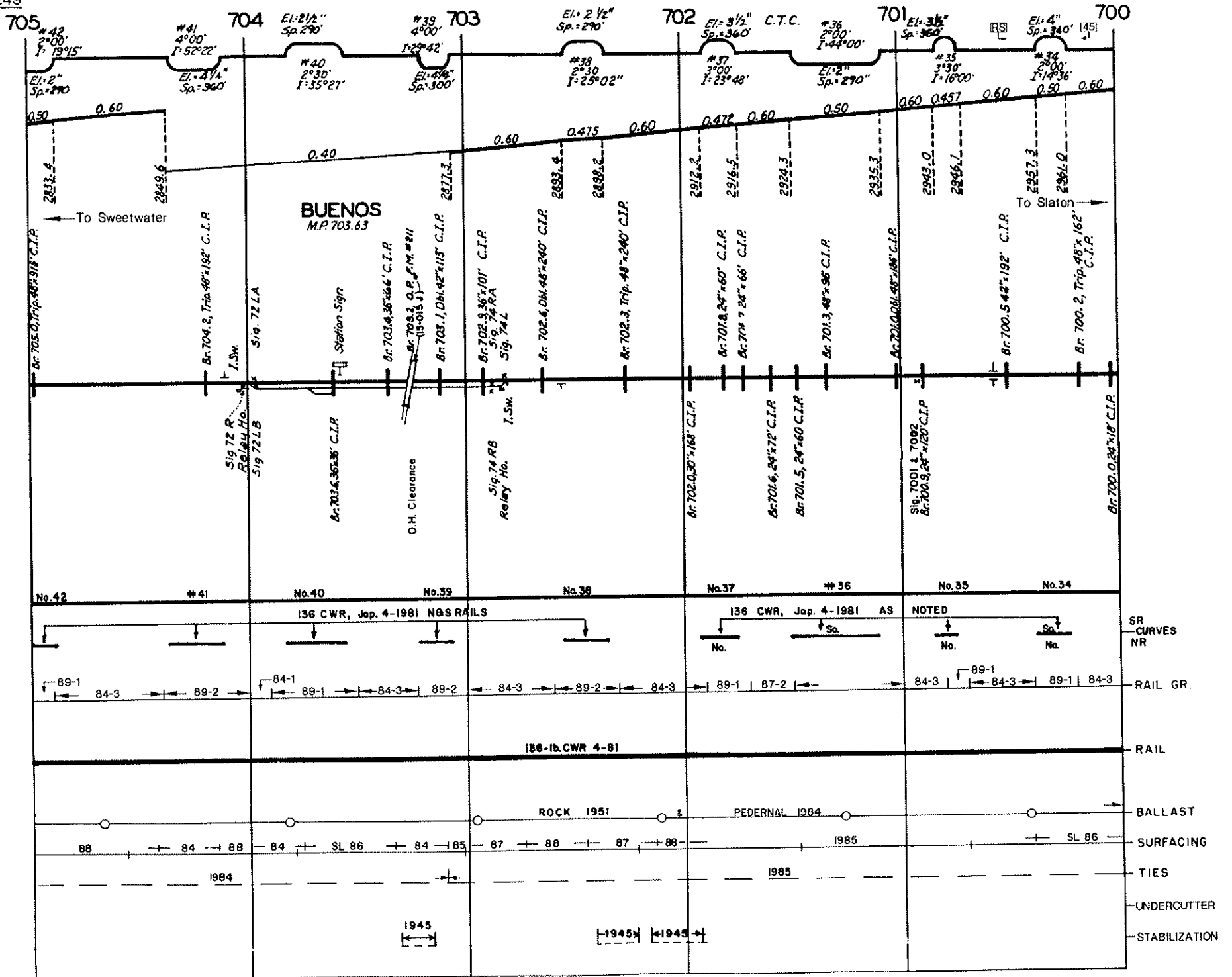


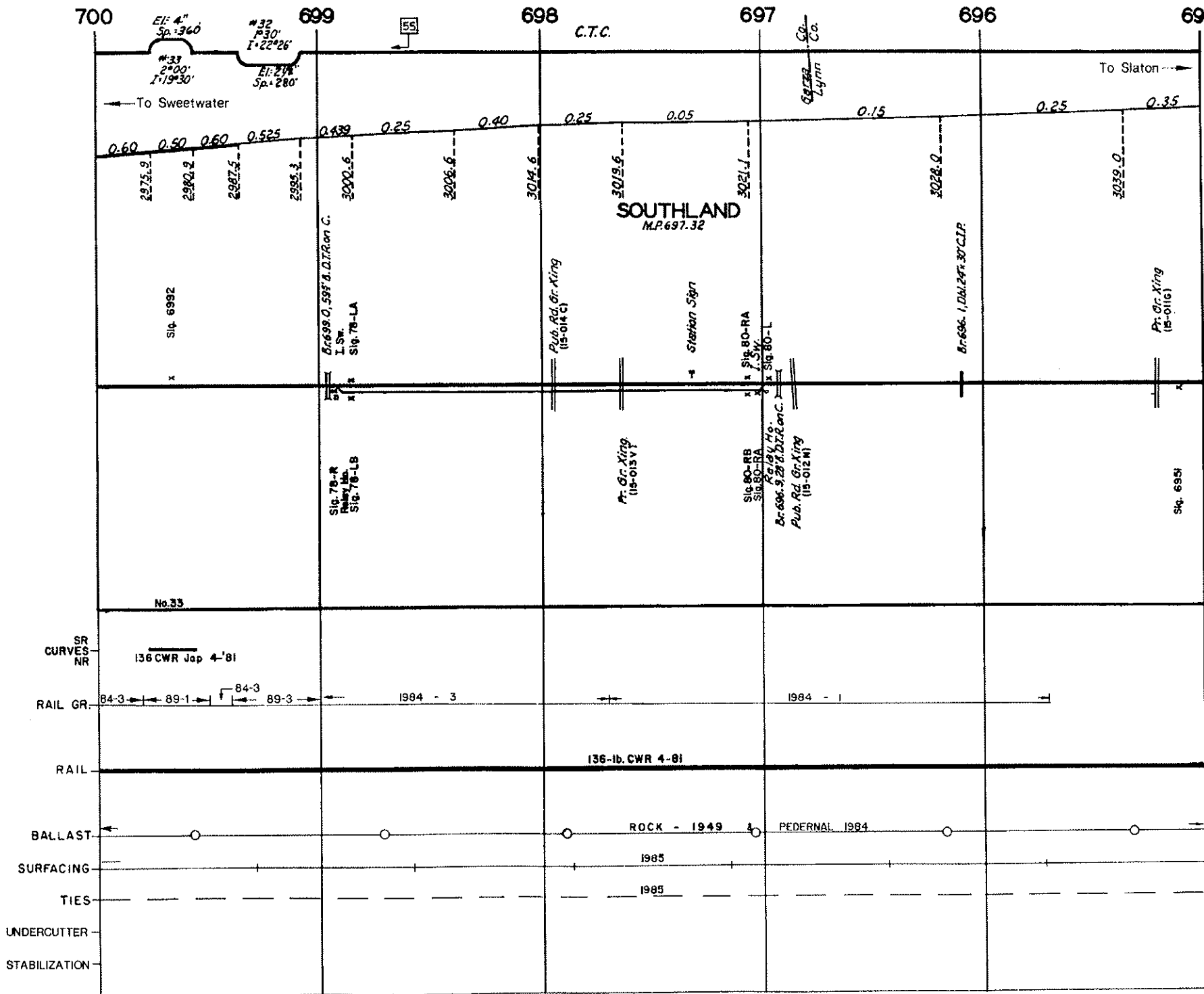


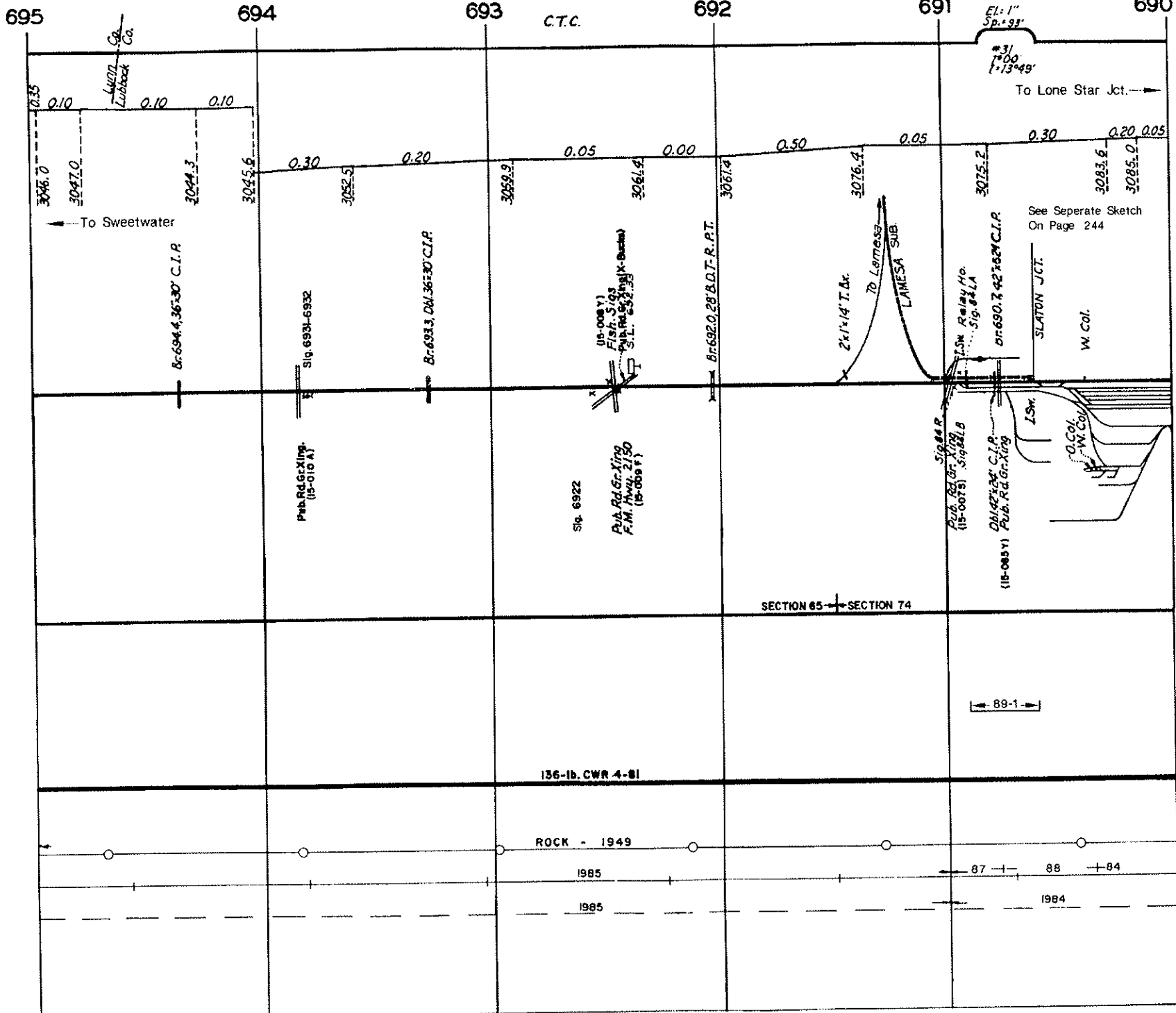












Slaton Subdivision

Slaton (M.P. 689.2) to Sweetwater (M.P. 792.2)

Intentionally Blank