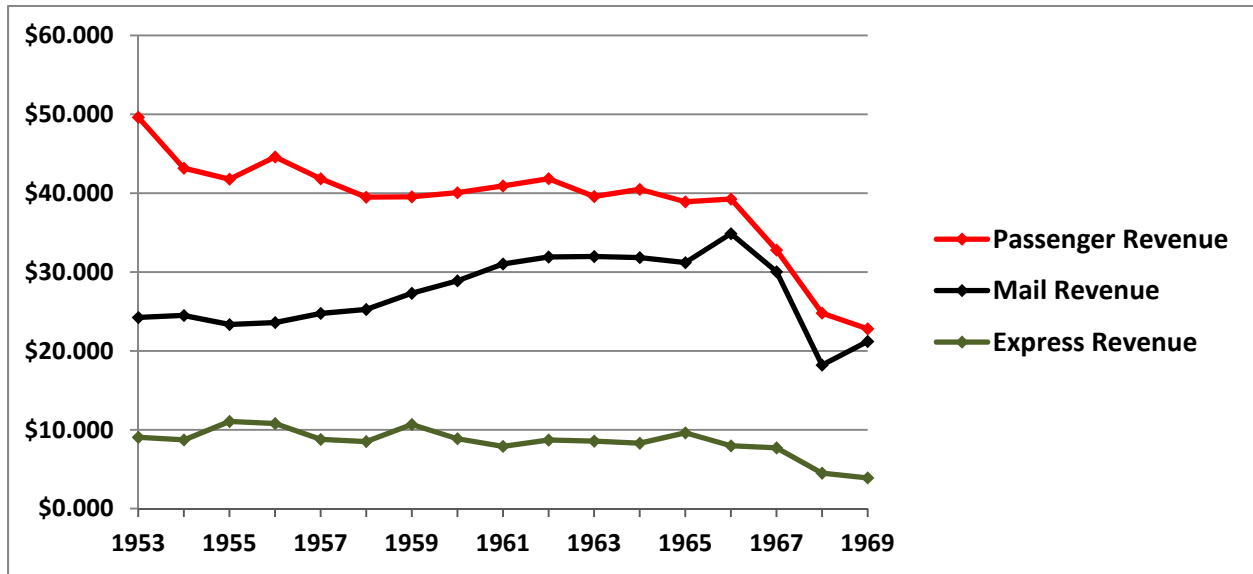


ATSF Passenger Train Revenue Streams (in millions), 1953-1969



The chart shows the three main revenue streams for Santa Fe passenger trains: passenger revenue, mail revenue, and express revenue. Not included is revenue from dining and buffet car service or miscellaneous revenue. After October 1967 most of the mail and express carried on the Santa Fe moved by freight train. *Source: Atchison, Topeka & Santa Fe Railway Company annual reports for the years 1960-1967, and Santa Fe Industries, Inc. annual reports for the years 1968-1969.*