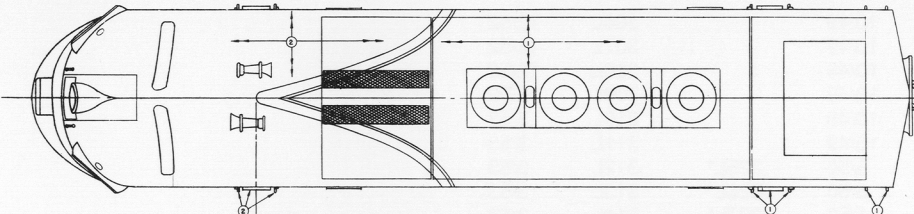


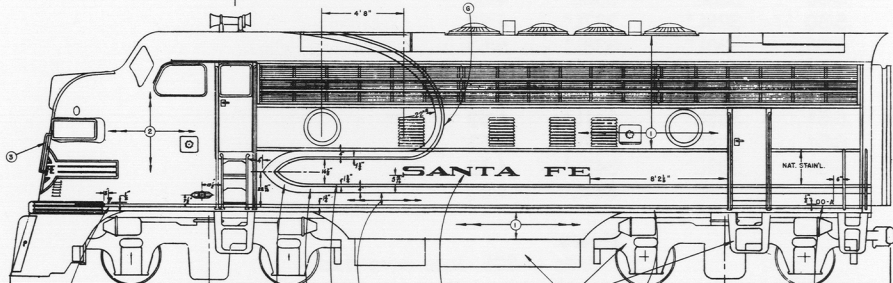
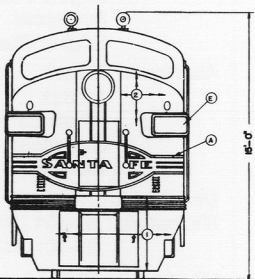
# SANTA FE DIESEL LOCOMOTIVE STYLING DIAGRAM

# F7-A PASSENGER

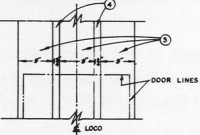
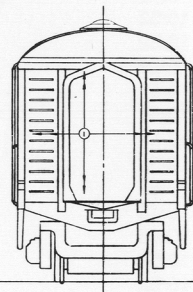
8132319



OF DOOR



OF DOOR



ENLARGED VIEW OF VERTICAL NOSE STRIPES

PORTHOLES-ANODIZED ALUMINUM - SATIN FINISH  
 CAB DOOR SASH - RED 254-1863-M  
 GRAB IRONS - GRAB IRONS  
 ENGINE ROOM DOOR SASH - NAT. STAINLESS 254-4202  
 GRAB IRONS - GRAB IRONS

THE PORTIONS OF STAINLESS STEEL SIDE PANELS TO BE PAINTED, ARE TO BE PRIMED WITH STANTITE PRIMER - SEE PROCESS SPEC. NO. 3023

WHEN NATURAL STAINLESS STEEL IS UNAVAILABLE BATTENS - FINISH ANGLES - PANELS - ETC. INDICATED ARE NATURAL STAINLESS SHOULD BE PAINTED IMITATION STAINLESS DUCO 254-4202

### STYLING & PRINTING DATA

#### COLORS & QUANTITIES REQUIRED PER LOCOMOTIVE

①	254-4202 - DUCO - IMIT. STAINLESS	
②	254-1863-M - DUCO - RED (254-30065)	
③	254-373 - DUCO - YELLOW (254-30423)	
④	254-2234 - DUCO - BLACK	
⑤	162-230 - BRASS ALUMINUM	
⑥		
⑦		
⑧		

#### PAINTING DETAILS

①	8102899 - FRONT MEDALLION	
②	8077461 - "S" SANTA FE	
③	8077460 - "S" LETTER "S"	
④	8077449 - "R" LETTERS & NUMERALS	
⑤	8102943 - "R" NO. BOX NUMERALS	
⑥	8077702 - SIDE STRIP TERMINATION	
⑦	8134744 - SIDE & ROOF STRIPING	
⑧	<i>CHECKED BY: [Signature]</i>	

#### REMARKS

		DATE		BY	

MATERIAL	
8132319	
8132319	
8132319	

ELECTRO-MOTIVE DIVISION	
GENERAL MOTORS CORPORATION	
1. A. UPRANGE, ELIZABETH, N.J. U.S.A.	
<b>STYLING &amp; PRINTING</b>	
8132319	

# SANTA FE DIESEL LOCOMOTIVE STYLING DIAGRAM

# F7-A (CAB) UNITS

Original Number	Date Built	Renumbered To:	Original Number	Date Built	Renumbered To:	Original Number	Date Built	Renumbered To:
37L	9/49		300L	10/49		306L	12/52	
37C	9/49		301L	10/49		307L	12/52	
38L	9/49		302L	10/49		308L	12/52	
38C	9/49		303L	10/49		309L	12/52	
39L	9/49		304L	10/49		310L	3/53	
39C	9/49		305L	10/49		311L	3/53	
40L	9/49		306L	5/50	325L*	312L	3/53	
40C	9/49		307L	5/50	326L*	313L	3/53	
41L	9/49		308L	5/50	327L*	314L	3/53	
41C	9/49		309L	5/50	328L*	336L*	4/53	
42L	10/52		310L	5/50	329L*	337L*	4/53	
42C	10/52		311L	5/50	330L*	338L*	5/53	
43L	10/52		312L	5/50	331L*	339L*	5/53	
43C	10/52		313L	6/51	332L*	340L*	5/53	
44L	10/52		314L	6/51	333L*	341L*	4/53	
44C	10/52		315L	6/51	334L*	342L*	4/53	
45L	10/52		316L	6/51	335L*	343L*	4/53	
45C	10/52					344L*	4/53	
46L	10/48							
46C	10/48							
47L	10/52							
47C	10/52							

### Notes:

\* Units of 325 class were dual-service locomotives geared for 80 mph.

### Model Paints (see text):

Red: Scalecoat  
Santa Fe Red  
Floquil  
Caboose Red

Yellow: Floquil  
Reefer Yellow  
Scalecoat  
Reefer Yellow

Black: Floquil  
Engine Black  
Scalecoat  
Engine Black

Aluminum: Floquil  
Amtrak  
Platinum Mist  
Scalecoat  
Aluminum

### Decals:

Microscale 87-101 (HO)  
60-101 (N)

Champ BRH-73 (HO)

**Note: The drawing on this diagram is for painting and lettering use only. Significant mechanical differences are present (drawing is actually an F-3 as all Santa Fe F-7's had D/B fans)!**

Aperture cards of original styling blueprints were donated to the Santa Fe Modelers Organization by Electro-Motive Division, General Motors Corporation.

Published by the SFMO, October 1991