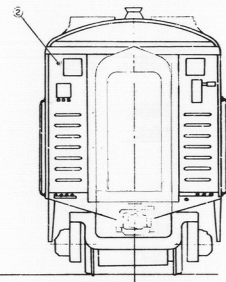
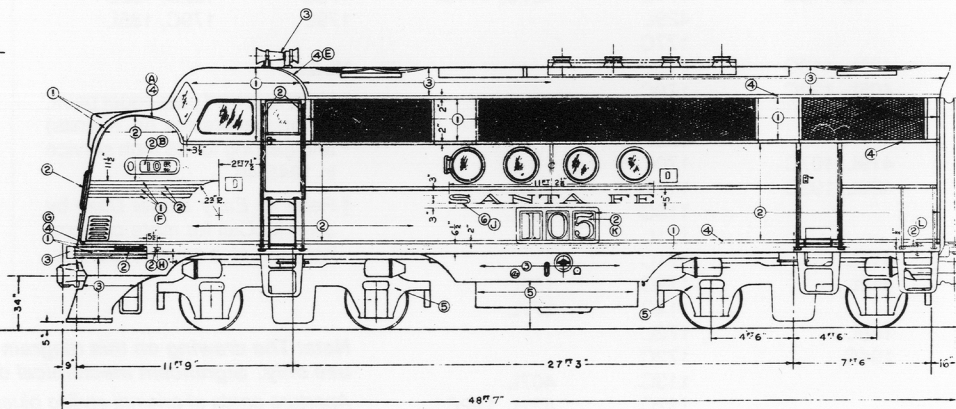
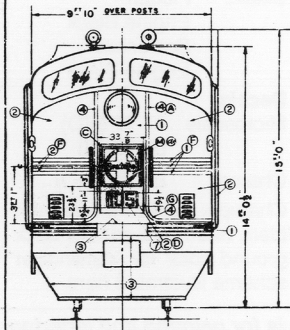
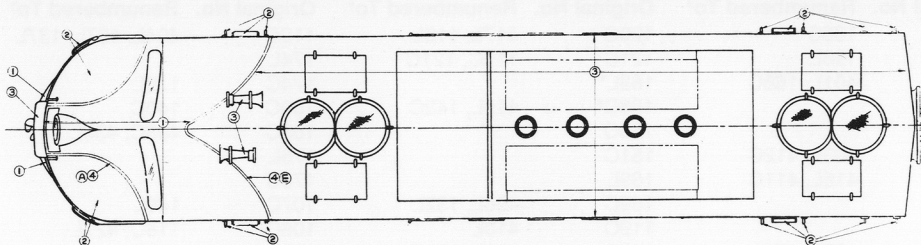


SANTA FE DIESEL LOCOMOTIVE STYLING DIAGRAM

FT-A FREIGHT

8077447



STYLING & PAINTING DATA					
COLORS AND QUANTITIES REQUIRED PER LOCOMOTIVE UNIT					
①	DUPONT DUCO 246-2504A YELLOW (2) STAINLESS STEEL				
②	DUPONT DUCO 246-25423 DARK BLUE				
③	DUPONT DUCO 246-2504 BLACK				
④	DUPONT DUCO 246-2509R SWIFT RED				
⑤	DUPONT DULUX 88-008 BLACK				
⑥	DUPONT DUCO GOLD BRONZE				
PAINTING DATA					
①	8077434 STRIPE PATTERN	⑧	8077438 NOSE STRIPES		
②	8077435 NUMBER BOX NUMERALS	⑨	8077439 STRIPE PATTERN		
③	8077436 MEDALLION DESIGN	⑩	8077440 3R LETTER 'P'		
④	804932 (804950 NUMBER PLATE) 8077441 SANTA FE LETTERS	⑪	804954 (8077003 NUMERALS) 8077442 17R NUMERALS		
⑤	8077437 ROOF STRIPE PATTERN	⑫	8077443 2R NUMERALS		
REMARKS: R.R. LOCO NO. 100 - 113 LBL.					
⑬ 8078810 MEDALLION					
REV	DATE	REVISION	REVISED BY	CHECKED BY	APP'D BY
A	4/15/65	-8078810 ADDED DUPONCO 246-2504 PMS 6 LBS 80-625	Zucker	JM	JM

1350 HP FREIGHT LOCO "A" SECTION

ELECTRO-MOTIVE DIVISION GENERAL MOTORS CORPORATION LA GRANGE, ILLINOIS, U.S.A.			
STYLING & PAINTING			
FIRST USED ON E 561.			
DRLB DEDEK	8-22-63	APPROVED	DRAWING NO.
CHL			8077447
INSP.	2-24-65		
DATE OF PRINT		REVISION	

SANTA FE DIESEL LOCOMOTIVE STYLING DIAGRAM

FT-A (CAB) UNITS

Set 100 built 12/40. Remainder built 1/41 - 8/45

Original No.	Renumbered To†	Original No.	Renumbered To†	Original No.	Renumbered To†	Original No.	Renumbered To†
100L		159L*	135C	120C	417L, 118L	110C	404L, 407L, 137L
101L	100C, 102L	136C	198L	121C	119C, 121C	174L	
101C	103L	137C	401L, 168C	168L*		174C	178L
104L - 152L		160L*		168C*	415L, 142C	109C	140C
152C	413L	160C*		150C		108C	408C, 430L
122C	422L, 128C,	138C	403L, 412C	151C		175L	
122C		139C	416L, 411C	169L		175C	
123C	124L	161L*		169C	406L, 132L	107C	140L
152L	153I	161C*		119C	410L	106C	118C, 427L
153C	193L	140C	137C, 138L	118C	408L, 131C	178L	174C
124C		141C	414L, 118C	177L	407C, 114C,	178C	182B, 182C
125L	126L	162L*		429L		179L	179C, 185L
154L		162C*		177C			
154C		142C	428L, 110C	176L			
126C		143C	405L, 132C	176C			
127C	136C, 127C	163L*		105C	183L		
155L		163C*		170L			
155C	195L	144C	419L, 107C	170C			
128C	199L	145C	420L, 193C	117C	180L		
129C		164L*		116C	181L		
156L		164C*		171L			
156C	196L, 197C	146C	411L	171C			
130C	191L	147C	412L	115C	182L		
157C	197L	165L*		114C	177L		
157L		165C*	186L	172L			
131C	428L, 107L	148C	194C	172C			
132C	199C	149C		113C	407L		
133C	158L	166L*		112C	421L, 192C		
158C*	189L	166C*	187L	173L			
134C	400L	167L*		173C	184L		
135C	426L, 111C	167C*	188L	111C	409L, 120C		

Notes:

* Units received passenger paint, steam generators (in A units) and gearing for 95 mph service in 1945-46.

† Refer to *Early Diesel Daze* by John McCall for more comprehensive notes on renumberings.

Note: The drawing on this diagram is for painting and lettering use only. Significant mechanical differences may be present!

Aperture cards of original styling blueprints were donated to the Santa Fe Modelers Organization by Electro-Motive Division, General Motors Corporation.

Published by the SFMO, October 1991

Model Paints (see text):

Blue:	Floquil
	3 pts. Dark Blue
	1pt. Engine Black
	Scalecoat
	Santa Fe Blue
Yellow:	Floquil
	3 pts. E.L. Yellow
	1 pt. Reefer White
	Scalecoat
	Same colors
Black:	Floquil
	Engine Black
	Scalecoat
	Engine Black

Decals:

Microscale	87-77 (HO)
	60-77 (N)
Champ	EH-72 (HO)
Champ's Santa Fe nose emblem has more correct background color for "catwhisker" scheme illustrated here.	