

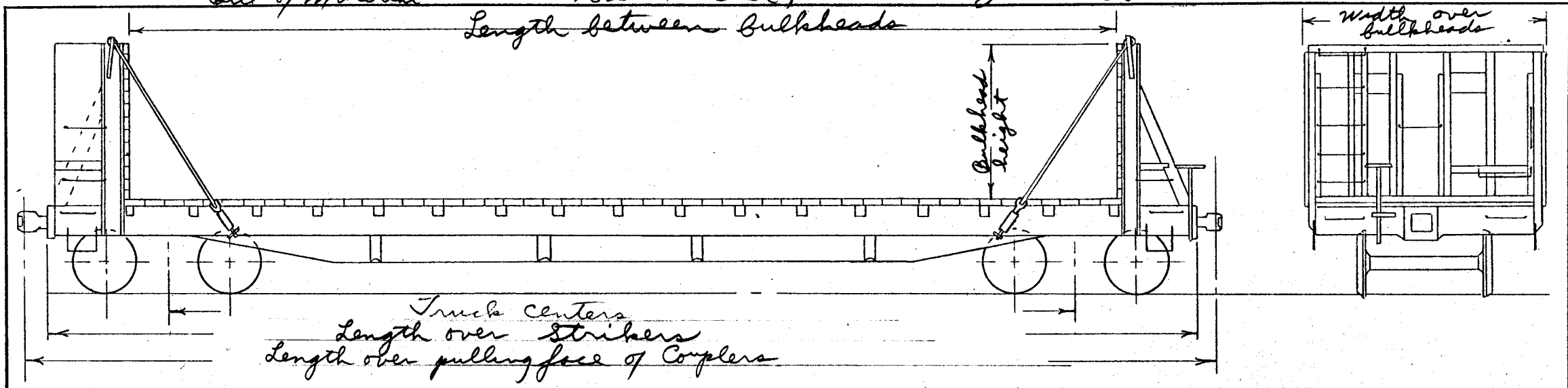
DATE OF REVISION	

FT-10 Wallboard loading service
 AAR - Mech. Designation FMS
 Body drg list 3364
 Truck drg list 3365
 Bill of Material 982

Series 91232-91238
 91330-91409
 91425-91434
 Modified to Wallboard service 1960 & 61
 Letter of 7-29-60 Job F-553



Car diagram FOLIO 211/4
 PAGE F-32-A



* Nominal Capacity	100,000 lbs	Gen. argt. drg.	26-A-5839	Truck general argt drg.	
Load Limit	117000 lbs	Gen argt. drg. of bulkhead	SK-A-9994	Bushings	20-A-2701
Lightweight of car	60000 lbs	Drg list of bulkhead application	3424	Sym-Should	20-B-2692
		B. of M. for bulkhead application	1075	Scullin	20-A-2873
Length--		Underframe	Built-up steel	Wheel base of truck	5'6"
* between bulkheads	48'6"	Brake adjuster	OBM-L	Truck centers	43'3"
over end sills	53'6"	Floor	3" decking	Wheel base of car	48'9"
* over strikers	54' 2-3/4"	Draft gear	AAR Standard	Axle	5-1/2 X 10 drg. 20-D-3046
over pull. face of cplrs.	56' 8-3/4"	Coupler	Rotary "E" head	Spring travel	3-11/16"
Width		yoke	Vertical Y-40 H.T.	Truck springs	
* over deck	10'6"	Handbrake	Equipto, drop shaft	A-3 trucks use #	3010, 3072, 3073
over bulkheads	10'0"	Brake beam	#18 unit type	RE-2 trucks use #	753, 3072, 3073
* over side sills	9'4"	Lading tie anchors	54 per car	Wheels --	one near wrought steel
* extreme over decking	10'6"		MacLean-Fogg or Keystone	Trucks --	Bushings with A-3 snubber
Height				side frame	CS-2949 drg. 20-A-2700
* Bulkhead	6'8"			bolster	CS-2871 drg. 20-B-2683
* rail to top of deck	3'8-7/16"			Trucks --	Sym-Should with A-3 snubber
* rail to extreme width	3'8-7/16"			side frame	CS-2950 drg. 20-A-2693
* extreme to top of bulkhead	10'4-7/16"			bolster	CS-2951 drg. 20-A-2694
				Trucks --	Scullin with RE-2 snubber
				side frame	CS-2952 drg. 20-A-2703
				bolster	CS-2978 drg. 20-A-2872

* Information for the Official Railway Equipment Register