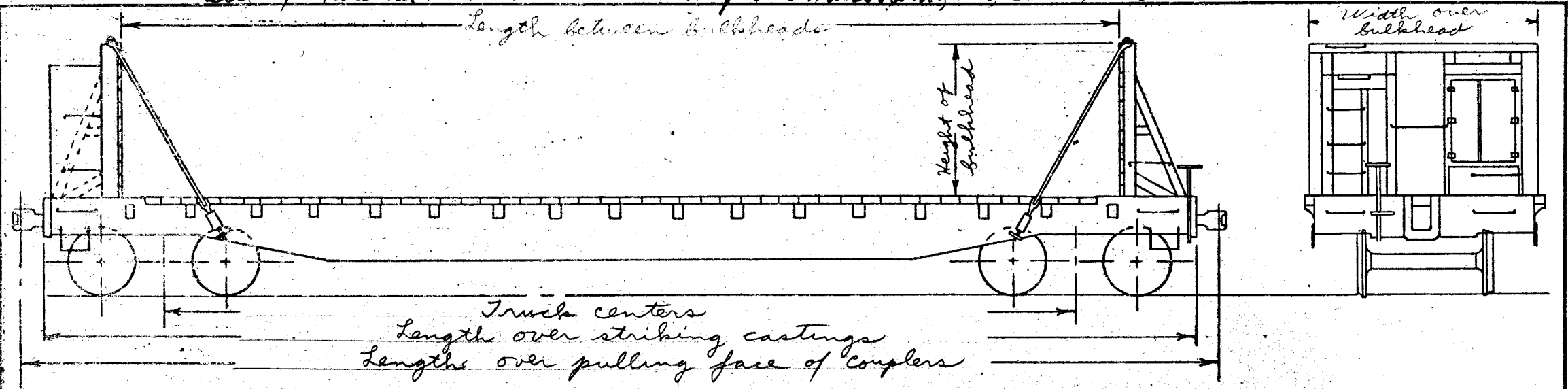


DATE OF REVISION	

FT-3 Wallboard loading service
 AAR Mech. designation FMS
 Body drg. list 3177
 Trucls drg. list 3178
 Bill of material 852

Series 91435-91496 62 cars
 92196-92234 39 cars
 92454-92480 27 cars
 93020-93034 15 cars
 Modified to Wallboard service 1957+58



* nominal Capacity	100000 lbs.	Gen. Arngt. drg.	26-A-4836	Truck Gen. Arngt.	ASF 20-B-2381
Load limit	116800 lbs.	Gen. Arngt. drg. of bulkhead	26-A-5425	Truck Gen. Arngt.	Buckeye C-R 20-B-2409
Lightweight of car	60200 lbs.	Drg. list of bulkhead application	none	Wheel base of truck	5' 6"
Length -- *between bulkheads	48' 6"	B. of m. for bulkhead application	1028	Truck centers	43' 3"
over end sills	53' 6"	Underframe -- Cast steel	26-A-4715	Wheel base of car	48' 9"
* over strikers	54' 3"	Handbrake -- Equipco	26-B-4334	Axle -- 5-1/2 X 10	drg 20-D-3046
over pull. face of cplrs.	56' 9"	Draft gear -- Peerless	H-1-B-2	Wheels -- 33" dia. 1-wear wrot steel	
Width -- *over deck	10' 6"	Coupler yoke -- vertical	Y-40 H. T.	Brake beam -- #18 unit type	
over bulkheads	10' 1"	Coupler -- Rotary "E" head		Journal box lid --	Davis
over side sill plates	9' 3"	Lading anchors	26-B-5061	Friction casting -- ASF trucks	20-B-1949
* extreme over decking	10' 6"	Air brakes -- Westinghouse "AB" 10 X 12		Friction casting -- Buckeye C-R	20-D-2411
Height -- *bulkhead				Truck springs -- ASF trucks #3010, 3072, 3073	
series 92196-92234	6' 8"			Truck spr. -- Buckeye trucks #740, 3072, 3073	
series 92461-92480	6' 6"			Trucks -- ASF with A-3 snubber	
series 93020-93034	6' 8"			side frame CS-2872 drg.	20-B-2380
* rail to top of deck	3' 5-1/2"			bolster CS-2871 drg.	20-B-2379
* rail to extreme width	3' 5-1/2"			Trucks -- Buckeye with C-R snubber	
* extreme to top of bulkhead				side frame CS-2878 drg.	20-B-2407
series 92196-92234	10' 1-1/2"			bolster CS-2879 drg.	20-B-2408
series 92461-92480	9' 11-1/2"				
series 93020-93034	10' 1-1/2"				

* Information for the Official Railway Equipment Register